








# Waverly Streetscape

# WAVERLY AT DEXTER CURRENT CONDITIONS



# WAVERLY AT DEXTER PROPOSED

## LEGEND:

- DO NOT ENTER 
- ONE WAY ON WAVERLY FROM DEXTER TO HOLMUR 
- ONE WAY ON WAVERLY FROM LIVERNOIS TO HOLMUR 
- TWO WAY ON TYLER ST 
- ONE WAY SOUTHBOUND ON HOLMUR 
- PERMITTED PARKING 
- RESTRICTED PARKING 
- ALLEY USED FOR RESIDENTIAL ACCESS 
- EXISTING BUSINESSES 



# DPW statement

**“If a street change is requested for a two way street to become a one way street we would consider making a recommendation to the street to between two main roads (Livernois and Dexter). We’d have to review it first.”**

**-Ashok Patel**

# Planning Department statement

**“We recommend using traffic calming mechanisms to slow down traffic and define parking on Waverly. We’ve found through research that one way streets speed up traffic.”**

# **STREETSCAPE IDEAS**

## Loveland Summer Sale!

We're offering a 25% discount on a limited number of Loveland accounts.

Tell me more ▶

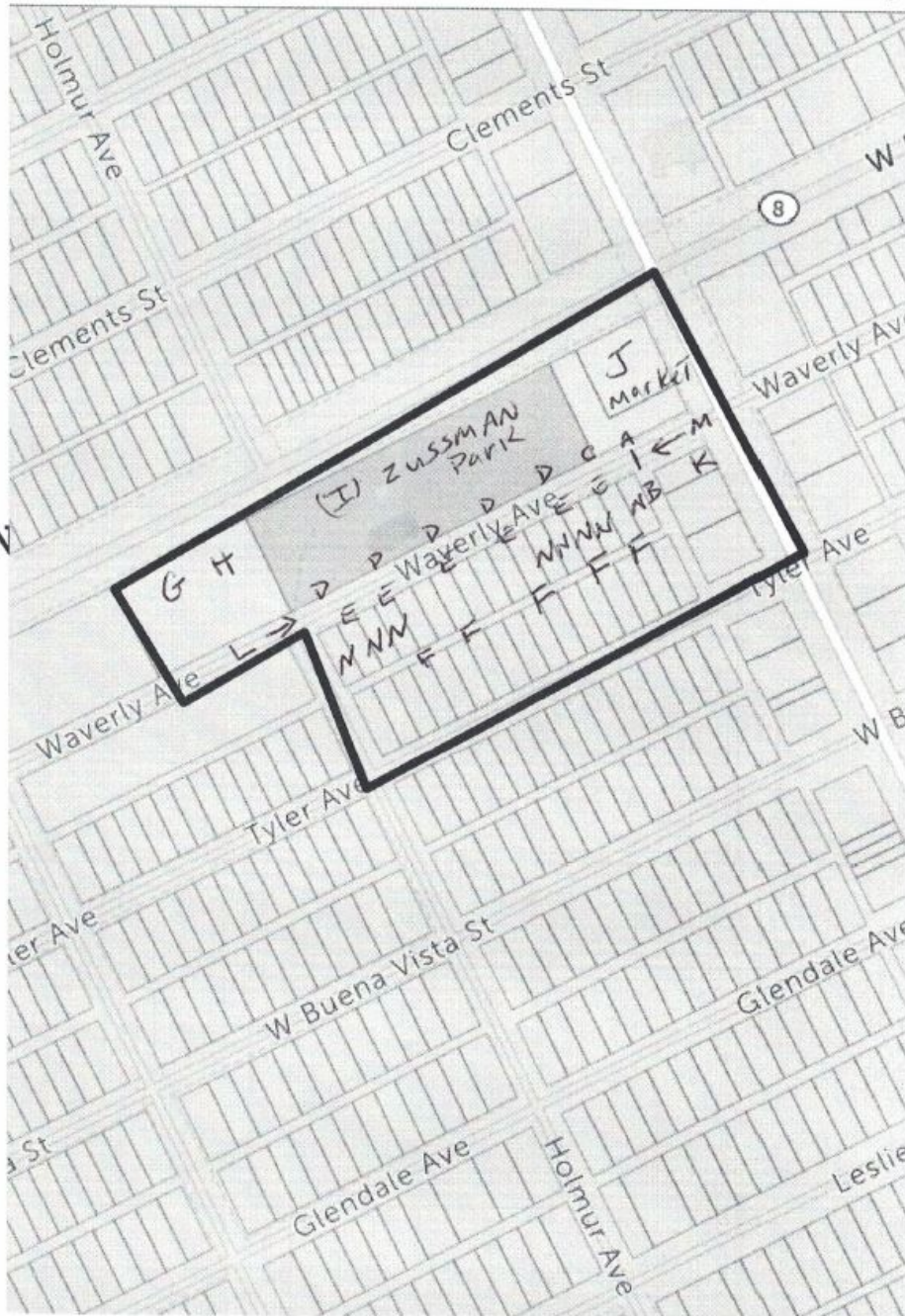
## 2018 HARDEMAN-WAVERLY SAFETY & REVITALIZATION PLAN

Make a Map Here

**10.79 ACRES**  
**0.02 SQUARE MILES**  
**42 PROPERTIES**  
**32 DIFFERENT OWNERS**

### TOP OWNERS

DETROIT LAND BANK AUTHORITY	10
THE SING GROUP LLC	2



**RUSSELL WOODS-SULLIVAN AREA ASSOCIATION**  
**GARLAND L. HARDEMAN, PRESIDENT/CEO RWSAA**  
 PO Box 33880 Detroit, MI 48238 (313) 221-5575

### PETITION FOR THE APPROVAL OF THE 2018 HARDEMAN-WAVERLY SAFETY & REVITALIZATION PLAN

- A. SECURED PYLONS/TRAFFIC DIVERTER, DO NOT ENTER SIGNS, TRAFFIC DIRECTIONAL SIGNS & WELCOME TO RUSSELL WODS SIGN.
- B. ONE WAY ALLEY SOUTHBOUND FROM WAVERLY TO TYLER.
- C. REPAIR FENCE TO PARK.
- D. NORTHSIDE OF WAVERLY PARKING SIGNS "FOR PARK USE ONLY/ 2 HOURS".
- E. SOUTHSIDE OF WAVERLY "PERMIT PARKING FOR RESIDENTS ONLY"
- F. CLEAR THE ALLEY-WAY FOR RESIDENTS AND THEIR VISITORS TO PARK BEHIND THEIR HOMES, INCREASE LIGHTING WITH DONATIONS FROM A HARDWARE STORE & VOLUNTEER INSTALLER.
- G. CITY OF DETROIT TO ISSUE A BLIGHT CITATION TO THE OWNER OF 4059 W. DAVISON OR TAKE ACTION TO SEIZE THE PROPERTY. (RWSAA WILL IDENTIFY A COMMERCIAL DEVELOPER FOR THAT PROPERTY)
- H. CLEAN UP THE PARKING LOT OF 4059 W. DAVISON & MAKE IT DESIGNATED PARKING FOR THE PARK (UNTIL A DEVELOPER IS IDENTIFIED FOR THE SITE).
- I. ZUSSMAN PARK SHOULD HAVE MORE SUPERVIZED ACTIVITES FOR YOUNG PEOPLE IN THE PARK TO MAKE IT SAFER FOR PARENTS TO ALLOW THEIR CHILDERN TO GO THERE. ALSO, MORE FREQUENT VISITS BY THE PARK POLICE & THE 10 PRECINCT OFFICERS.
- J. ENCOURAGE THE DEXTER MARKET TO MAKE VISIBLE IMPROVEMENTS ON THEIR BUILDING EXTERIOR & INTERIOR WITH THE ASSISTANCE OF THE (DEGC).
- K. SEE IF THE CHECK CASHING BUSINESS NEEDS ANY ASSISTANCE FROM (DEGC) AND ENCOURAGE THEM TO GET A GREEN LIGHT.
- L. MAKE WAVERLY A ONEWAY STREET EAST BOUND FROM HOLMUR TO THE MOUTH OF THE ALLEY TO MAKE A RIGHT TURN SOUTHBOUND TO TYLER.
- M. MAKE WAVERLY A ONEWAY WESTBOUND FROM DEXTER TO THE MOUTH OF THE ALLEY WITH MAX OF 20 MIN PARKING ON BOTH SIDES OF WAVERLY TO ACCOMMODATE THE DEXTER MARKET AND CHECK CASHING PATRONS.
- N. RWSAA TO ESTABLISH A COMMUNITY PARTNERSHIP AGREEGMENT WITH THE CITY OF DETROIT, DBLA, MLBA AND A HOUSING DEVELOPER REGARDING THE ACQUISITION, MAINTENNCE AND DEVELOPMENT OF HOUSING ON WAVERLY AT 3733, 3741, 3747,3755,3761,3783, 3797 3825.

# **PLANNING DEPARTMENT RECOMMENDATION 1**



# SPEED CUSHIONS



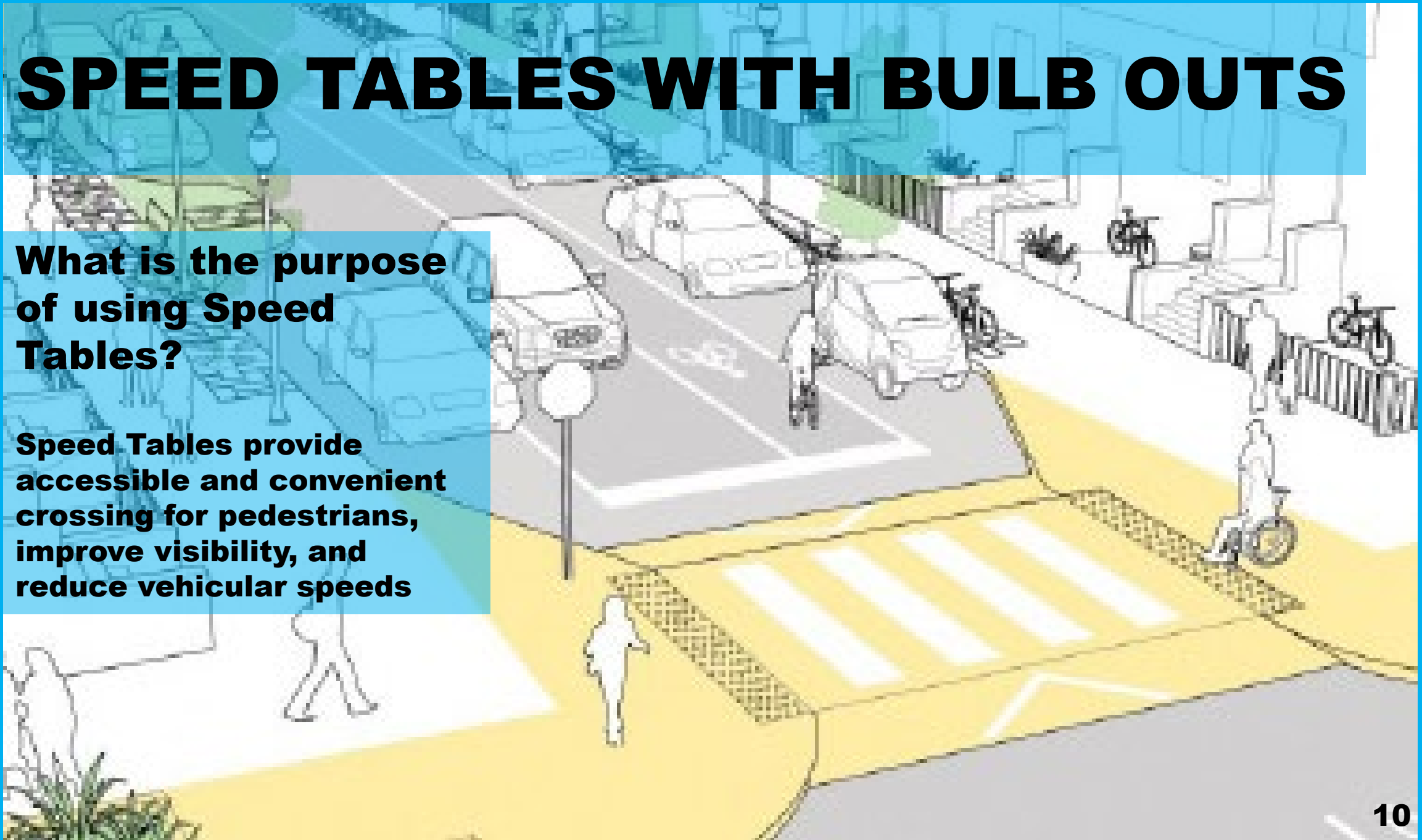
## What is the purpose of Speed Cushions?

Speed cushions are similar to speed bumps, or humps, but do not span the entire length of the street continuously. Instead, narrower speed cushions are installed to allow emergency vehicles and buses to pass through the gaps between with minimal impact.

# SPEED TABLES WITH BULB OUTS

**What is the purpose of using Speed Tables?**

**Speed Tables provide accessible and convenient crossing for pedestrians, improve visibility, and reduce vehicular speeds**



# (PDD & DESIGN TEAM) RECOMMENDATION 1

DAVISON

GAS  
STATION

WAVERLY  
MARKET

TRAFFIC TABLE  
WITH BULBOUTS

TRAFFIC TABLE  
WITH BULBOUTS

WAVERLY

TRAFFIC TABLE  
WITH BULBOUTS

HOLMUR

CHECK  
CASHING  
BARBER-  
SHOP AND  
HAIR  
BRAIDING  
GARRISON'S  
AUTO  
GLASS

DEXTER

CLEANERS

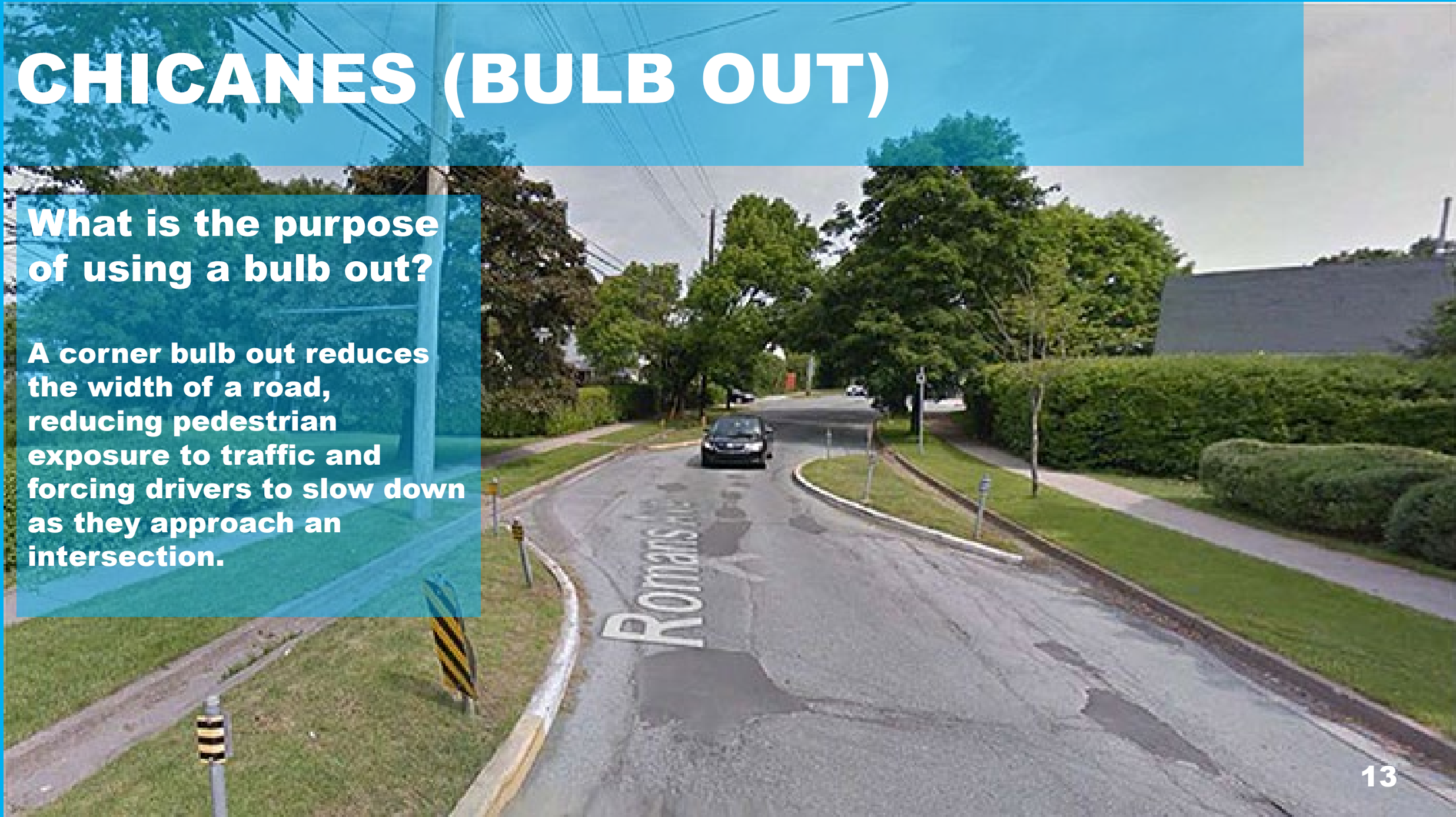


# **PLANNING DEPARTMENT RECOMMENDATION 2**

# CHICANES (BULB OUT)

**What is the purpose of using a bulb out?**

**A corner bulb out reduces the width of a road, reducing pedestrian exposure to traffic and forcing drivers to slow down as they approach an intersection.**



# CHICANES (EXAMPLE 2)



# DAVISON (PDD & DESIGN TEAM) RECOMMENDATION 2

GAS  
STATION

WAVERLY  
MARKET

**BULB-OUTS WITH DESIGNATED PARKING ZONES FOR TRAFFIC CALMING**

WAVERLY

CHECK  
CASHING

BARBER-  
SHOP AND  
HAIR

BRAIDING

GARRISON'S  
AUTO  
GLASS

CLEANERS

HOLMUR

DEXTER



# NEXT MEETINGS

WEDNESDAY,  
NOVEMBER 7<sup>TH</sup>, 2018  
MEETING

PRESIDENT OF THE  
RWSAA  
AND  
PASTOR GARRETT



WAVERLY  
STREETSCAPE  
FOCUS GROUP

THURSDAY,  
NOVEMBER 15<sup>TH</sup>,  
2018

AT 4:00 PM AT  
THE BOYS & GIRLS  
CLUB- DIEHL CLUB



RW+ NP  
COMMUNITY  
MEETING #3

THURSDAY,  
DECEMBER 13<sup>TH</sup>,  
2018 ALL DAY  
LOCATION TBA



# NEXT STEPS

Resident turns in  
Petition to the City  
Clerk's office  
(The resident leaves  
contact information  
with the Clerk. The  
petition will get  
assigned a case  
number)

Petition gets  
sent to the  
designated  
department for  
review

\*The petition is  
reviewed and  
recommendations  
are made to City  
Council

\*The petition will  
be reviewed by  
City Council and  
approved or  
denied

Detroit City Clerk's Office  
2 Woodward Ave, Suite 200,  
Detroit, MI 48226  
313-224-3260

\* More signatures may be  
requested as a requirement  
to move forward