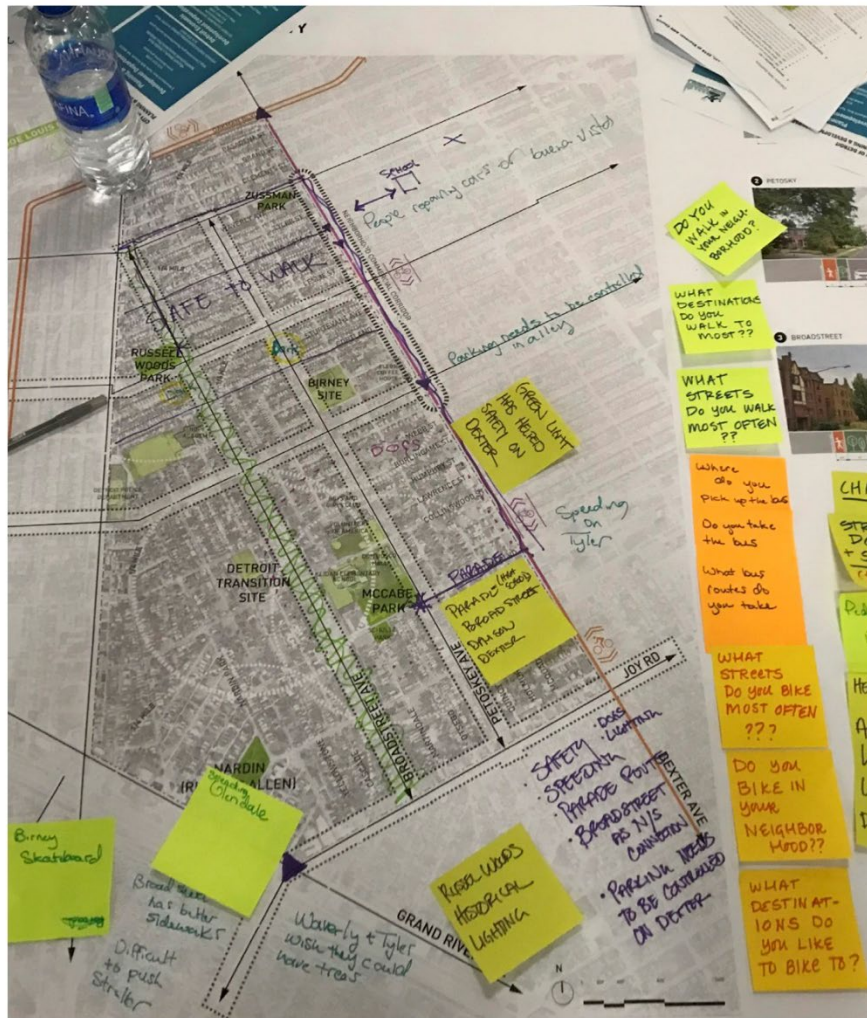


**MOBILITY
AND
STREETSCAPE**



**MOBILITY
+
STREETSCAPE**

Feedback from April 2018 Community Meeting



- Safety in the #1 concern.
- There is great interest in
- re-establishing the parade route.
- Broadstreet is an important north-south connection in the neighborhood.
- Need better parking solutions along Dexter.

Feedback from May 2018

Focus groups

MOBILITY

Integrate Art and Activate the Street: Groundplane



Reclaim street space with art

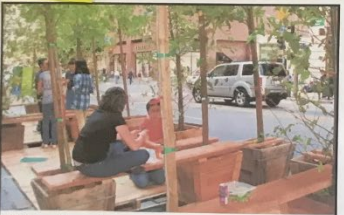
History
WALK



Adding movable planters to beautify the right-of-way



Create safe crossings with intersection paint



Add seating and communal space



Add visible, on-street bike parking



Sculpture along transportation corridors

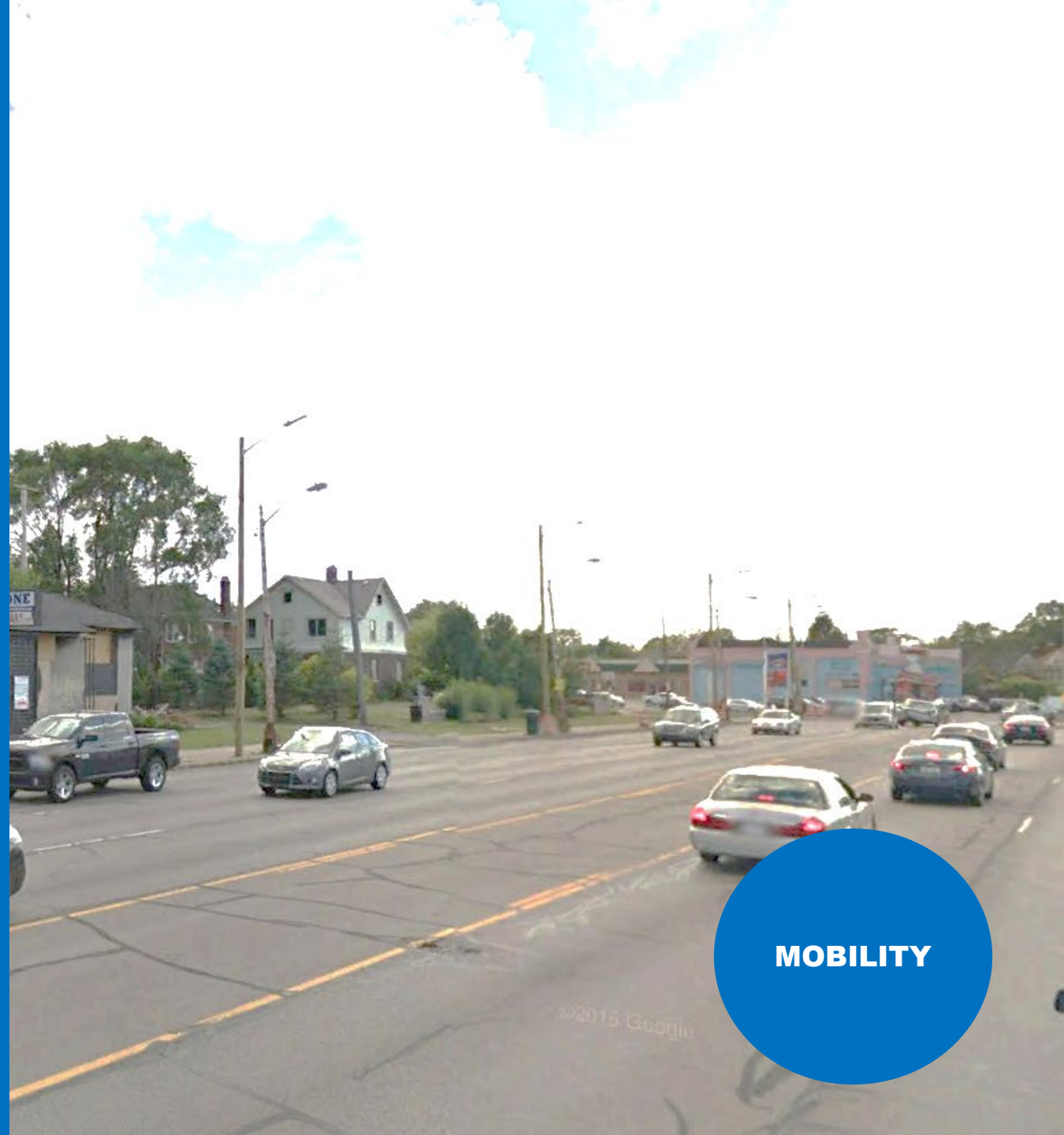
Community members were:

- concerned about **safety** issues at **Broadstreet** at Davison
- interested in **activating vacant spaces** as **gathering spaces**.
- interested in **Elmhurst** as a potential **Joe Louis Greenway connector**.



Community Goals

1. Make the street attractive for new businesses
2. Make travel easier to and from the neighborhood for all users
3. Improve safety to reduce pedestrian and bicycle crashes



MOBILITY

DEXTER AVENUE STREETSCAPE

Dexter Avenue:

Make the street attractive for new businesses



**STREET-
SCAPE**

Dexter Streetscape Options

- Gathering spaces
- Street furniture
- Defined parking
- Bike lanes
- Improve sidewalks
- Trees
- Landscaping
- Art
- Banners
- Lighting



**STREET-
SCAPE**

Dexter Comment Cards

- Wider sidewalks and bike racks
- Restore buildings, trees, restaurants, cafes, coffee shops, murals, art!
- Flower pots with flowers, better bus stop shelters, bicycle racks, large cross walk markings
- Safe bike lanes, on –street parking, planter protected bike parking, slower traffic
- Fullerton needs repair
- Signal and Dexter

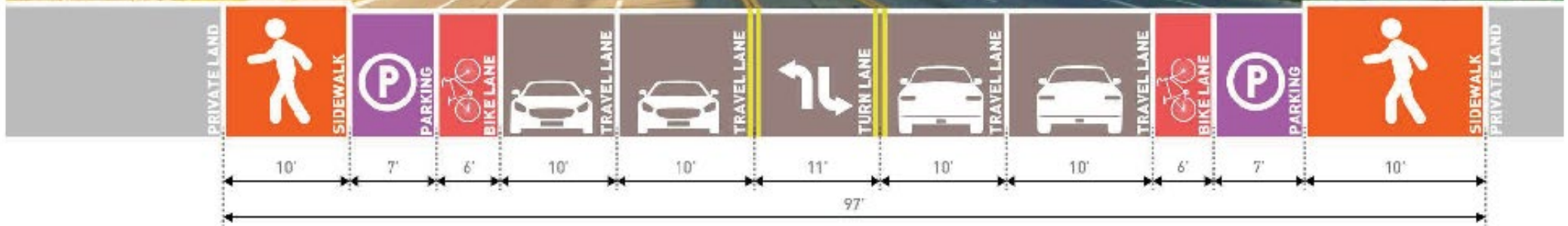


**STREET-
SCAPE**

Dexter Avenue

Existing Streetscape

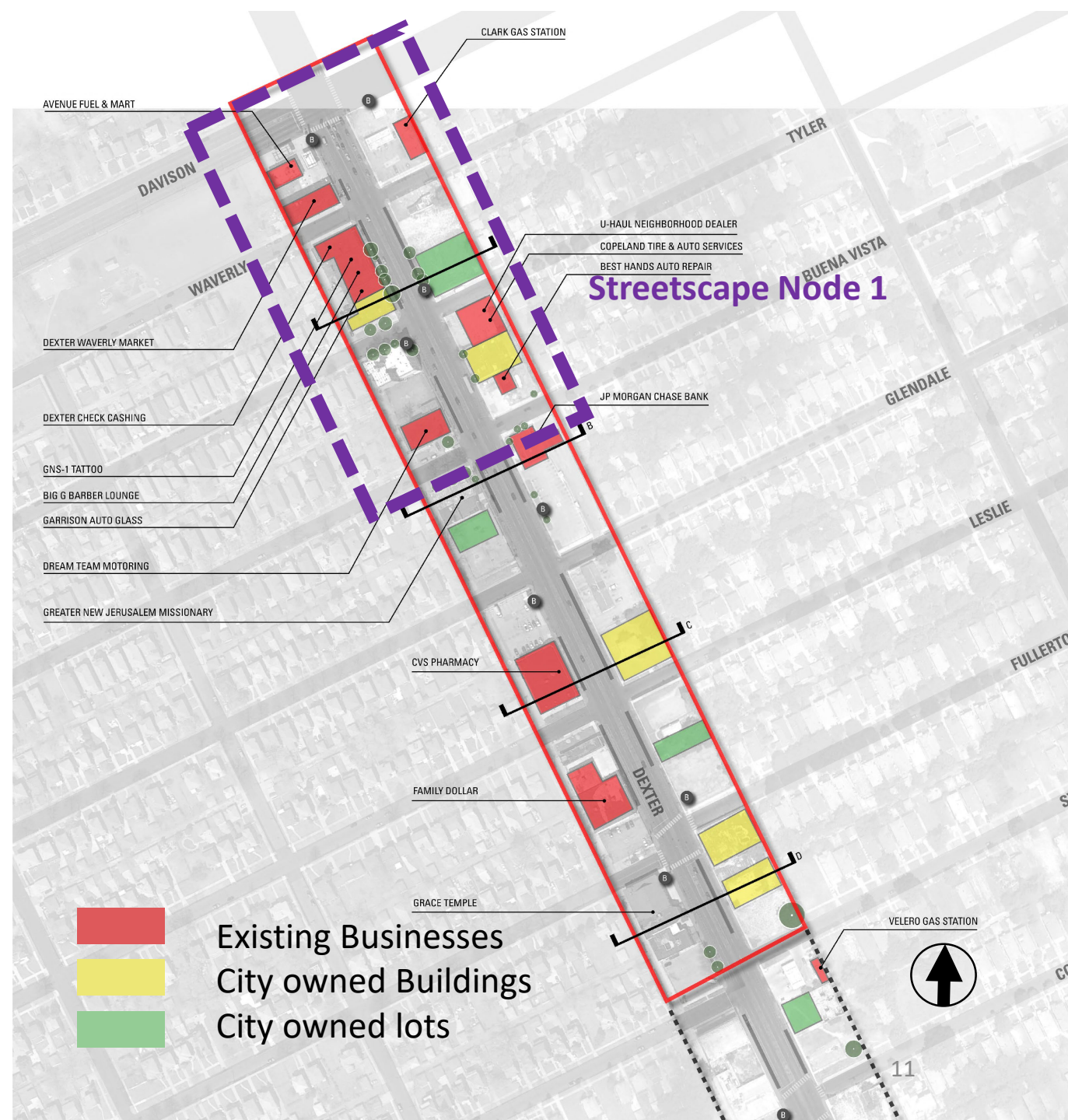
On average
8,400 cars
Traveled on Dexter
between Davison
and Fullerton
Daily in 2013



Dexter Avenue Existing Streetscape

Node 1: Davison to Buena Vista

- Existing active businesses
- High speed traffic and crash rate
- Two city owned buildings
- One large area of city owned lots
- Narrow sidewalks
- Bike lanes
- Opportunity for mural at Tyler





Dexter Avenue

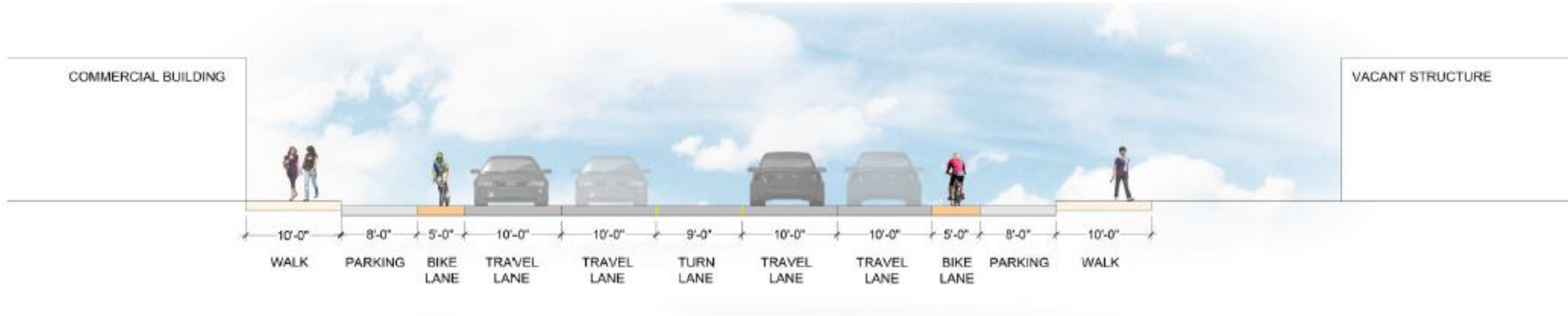
Node 1

Existing Streetscape



Dexter Streetscape – Node 1

Option 1 – Enhance existing



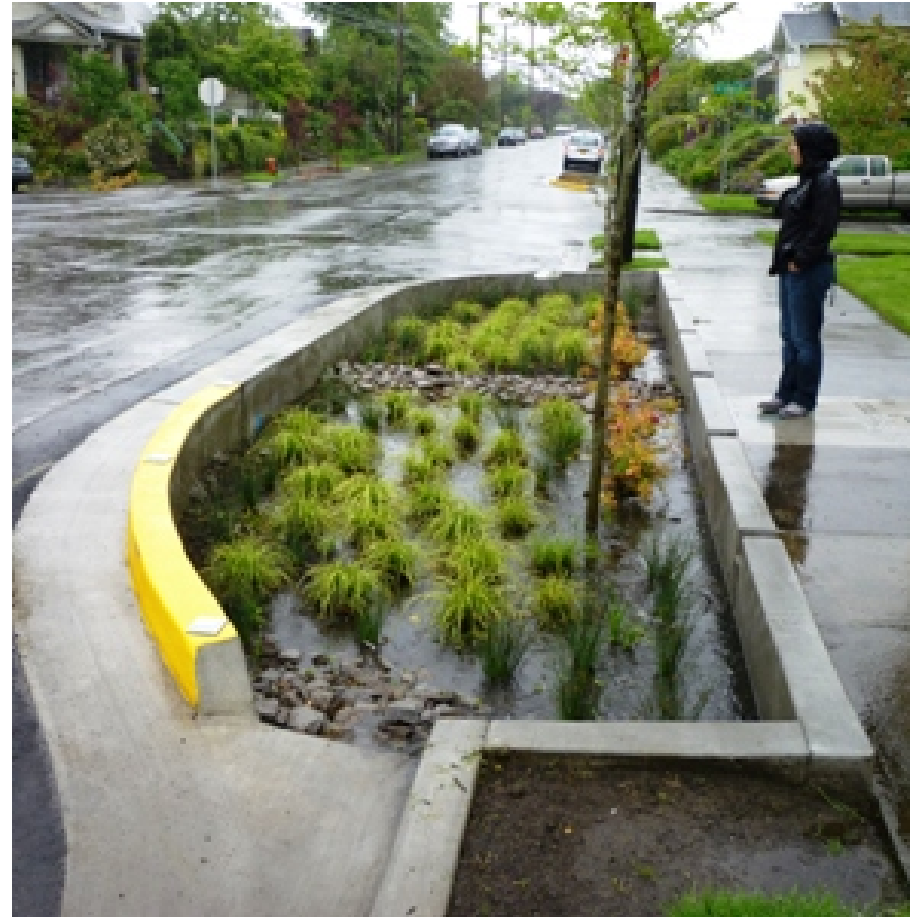
- Four lanes of traffic with turn lane
- Parking both sides of street
- Unprotected bike lanes
- Narrow sidewalks



Dexter Streetscape – Node 1

Option 1 Improvements

Pedestrian Bulbouts



Dexter Streetscape – Node 1

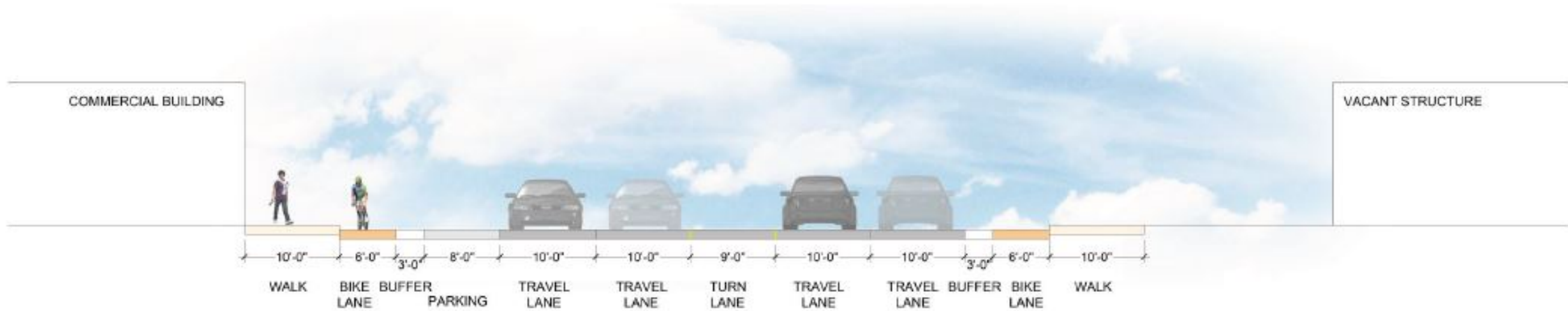
Option 1 Improvements

Midblock Medians



Dexter Streetscape – Node 1

Option 2



- Four lanes of traffic with turn lane
- Parking only on west side of street
- Protected bike lanes



Dexter Streetscape – Node 1

Option 2 Improvements

Protected bike lanes



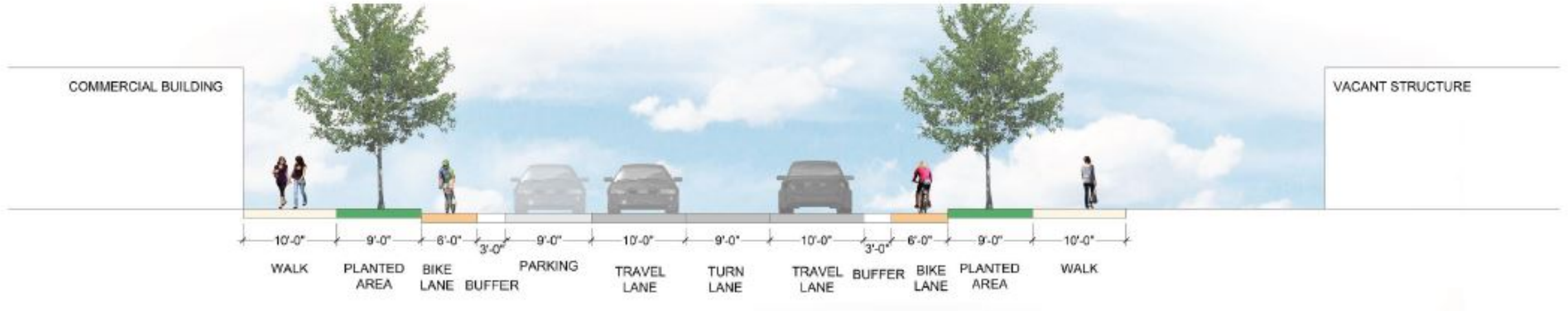
Dexter Streetscape – Node 1

Option 2 Improvements

Protected bike lanes



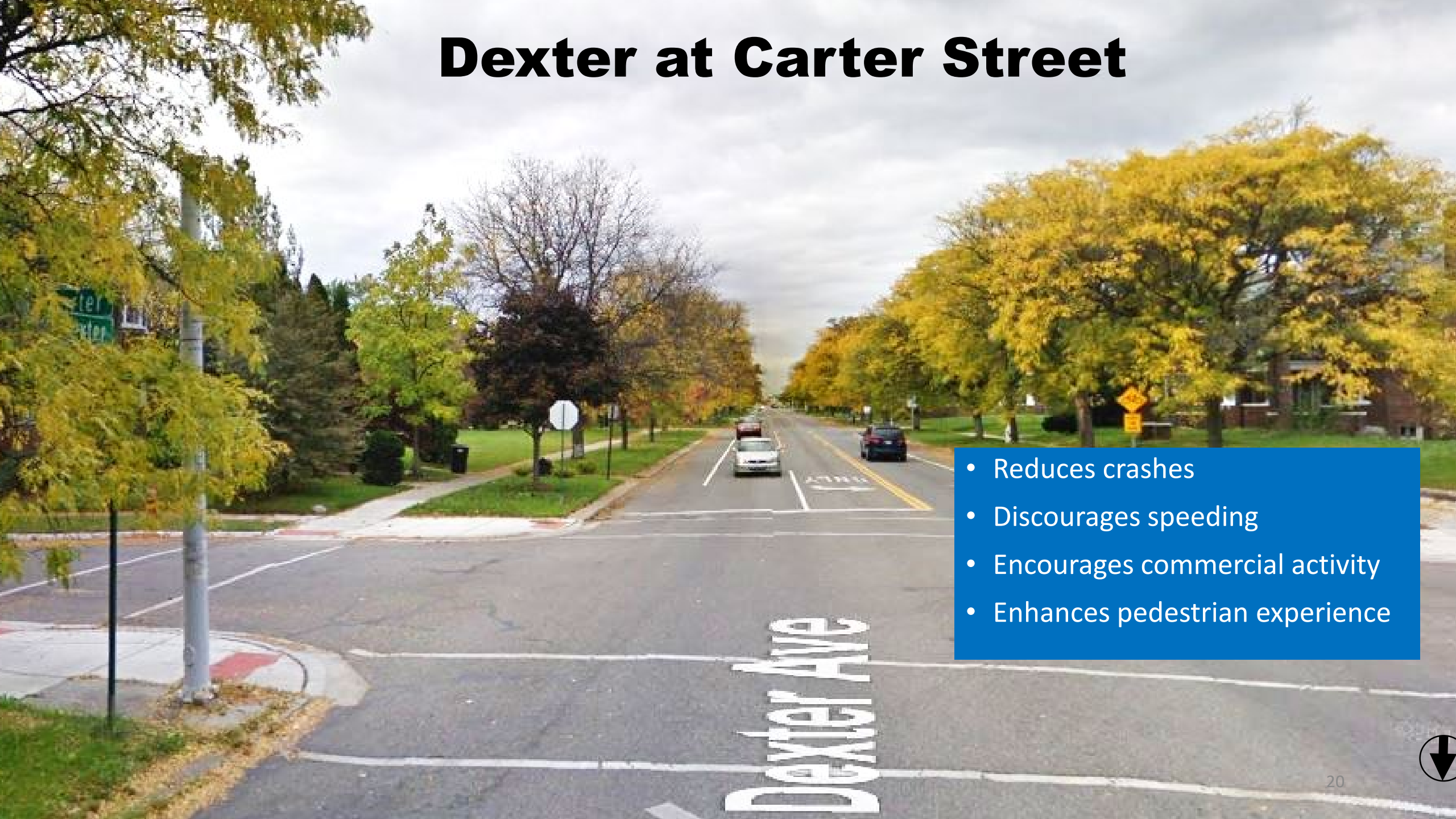
Dexter Streetscape Option 3



- Two lanes of traffic with turn lane
- Parking only on west side of street
- Protected bike lanes
- Widen sidewalk on both sides
- Add planted area and street furniture



Dexter at Carter Street



- Reduces crashes
- Discourages speeding
- Encourages commercial activity
- Enhances pedestrian experience



Dexter Avenue Node 1

Davison to Buena Vista

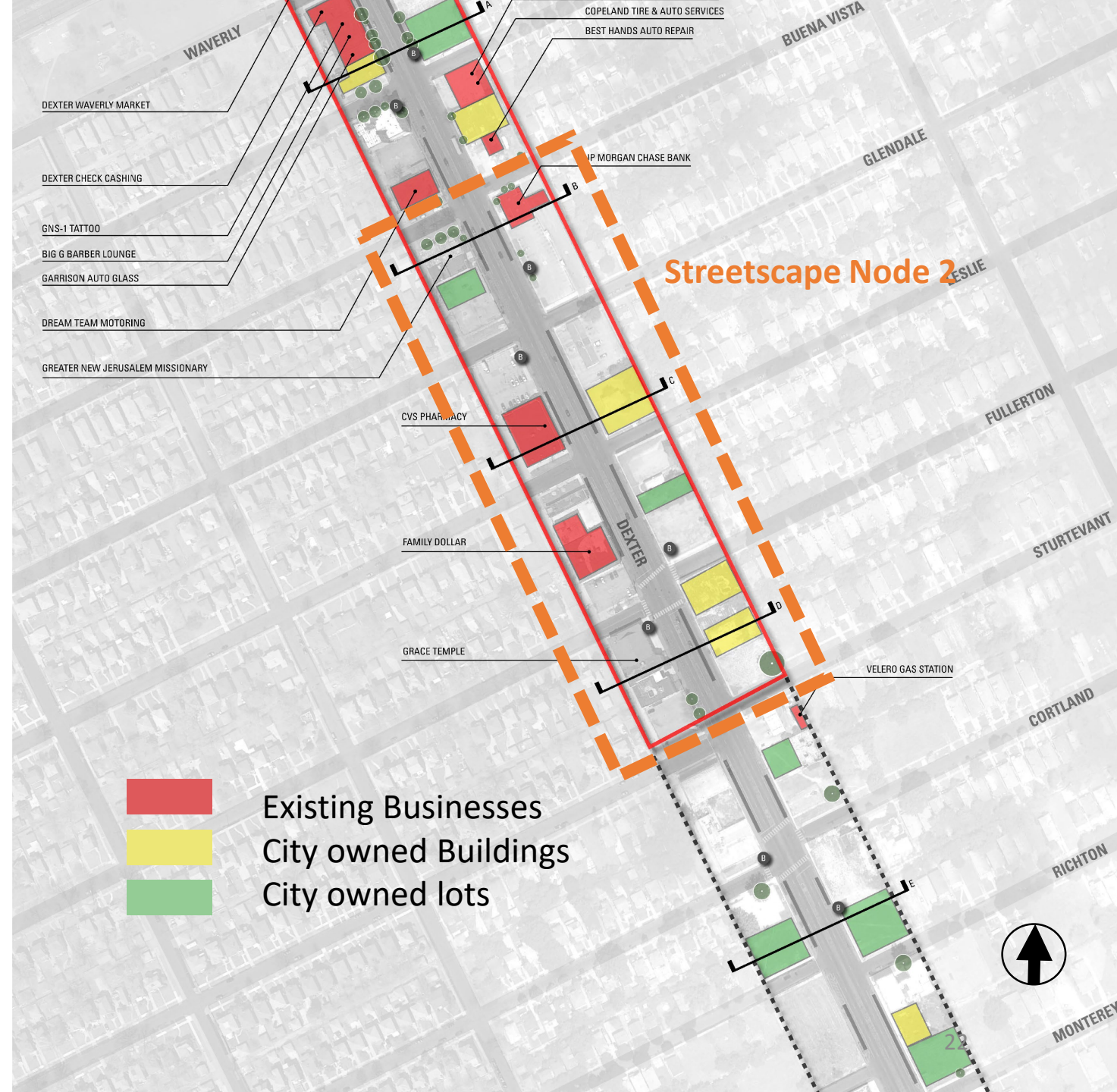


**Which option
do you prefer?**

Dexter Avenue Existing Streetscape

Node 1: Buena Vista To Sturtevant

- Existing active businesses
- Three city owned buildings
- Two city owned lots
- Average sidewalks with set back storefronts
- Bike lanes
- Opportunity for murals at CVS and Family Dollar



Dexter Avenue

Node 2

Existing Streetscape



Dexter Streetscape – Node 2 Option 1

Enhancement of Existing Conditions



- Four lanes of traffic with turn lane
- Parking on both sides of street
- Unprotected bike lane
- Widen sidewalk on both sides
- Add planted area and street furniture

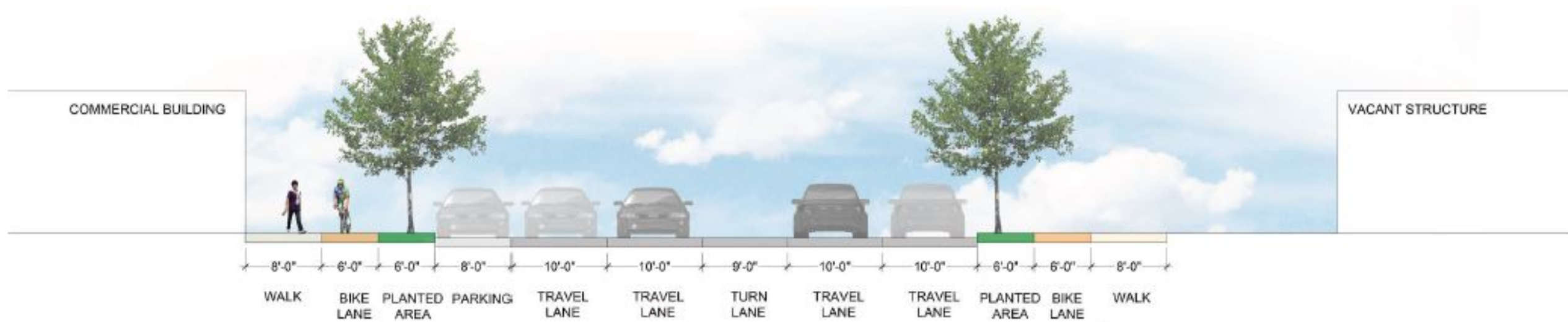


Dexter Streetscape – Node 2 Option 1



Dexter Streetscape – Node 2

Option 2



- Four lanes of traffic with turn lane
- Parking on west side of street
- Protected bike lane
- Planting area with trees and furniture



Dexter Streetscape – Node 2

Option 2

Protected bike lanes

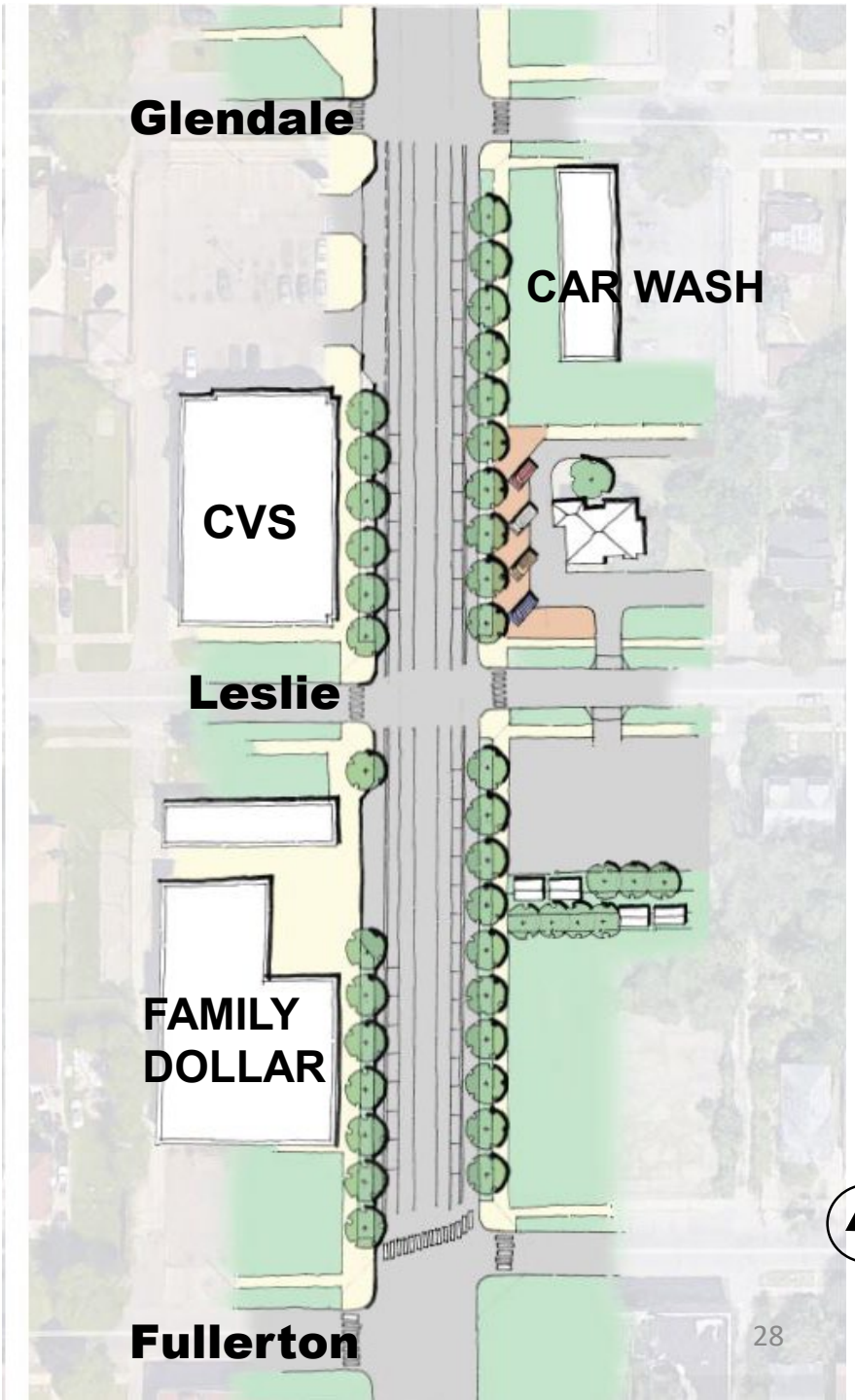


Dexter Streetscape

Node 2

Option 2 – Ariel View

- Two lanes of traffic with turn lane
- Parking on west side of street
- Protected bike lane
- Planting area with trees and furniture



Dexter Avenue Node 2

Buena Vista to Sturtevant



**Which option
do you prefer?**

**STREET-
SCAPE**

Russell Woods Neighborhood Gateways

Streetscape Ideas:

Broadstreet at Davison,
Detroit, MI

- Broadstreet/Davison masonry sign gateway

A photograph of a brick masonry sign gateway. The sign is made of dark brown bricks and features a central recessed panel with the text "RUSSELL WOODS - SULLIVAN" in raised, gold-colored letters. The sign is set against a background of trees and a clear blue sky. The foreground shows a grassy area with some dry brush and a concrete curb.

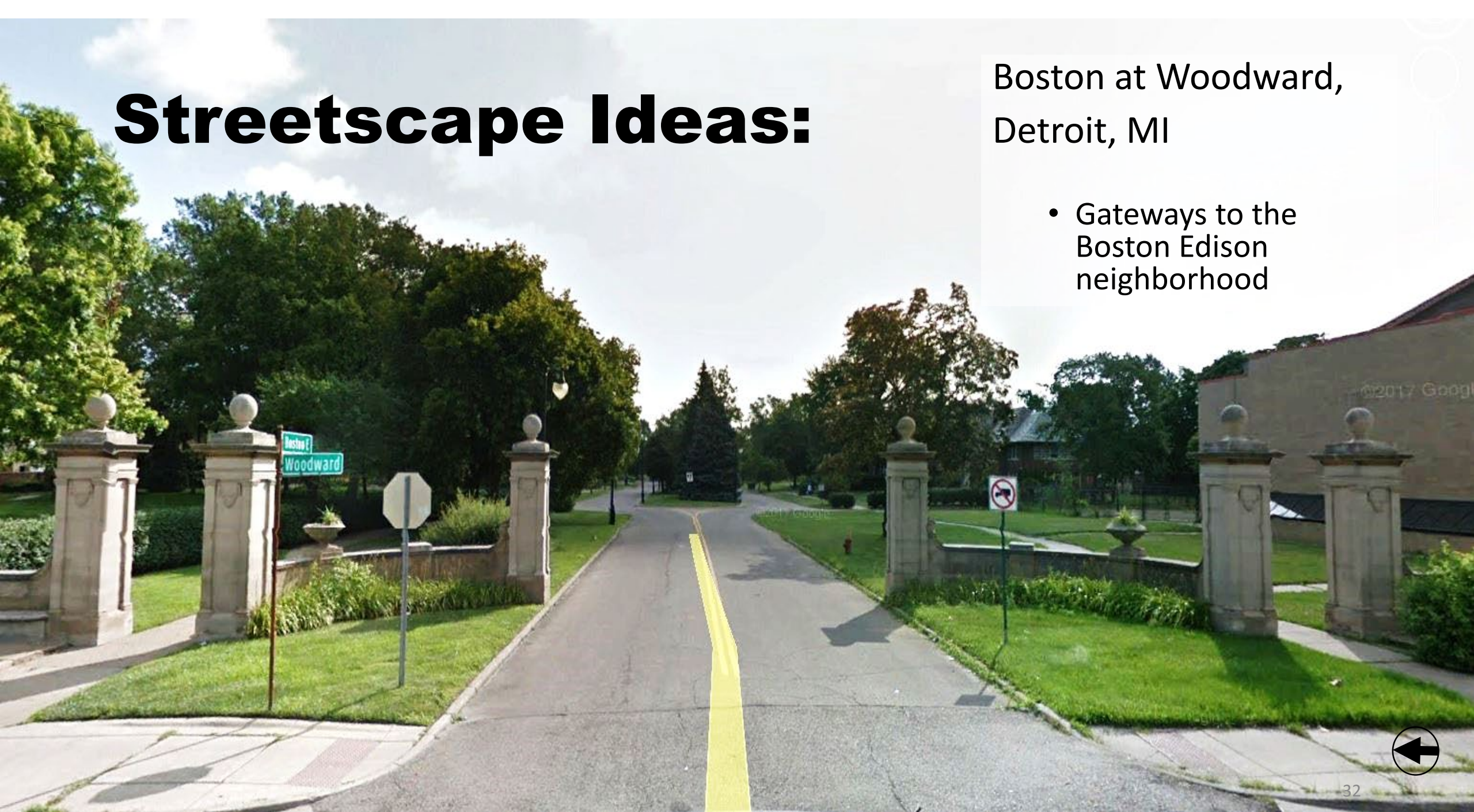
RUSSELL WOODS - SULLIVAN



Streetscape Ideas:

Boston at Woodward,
Detroit, MI

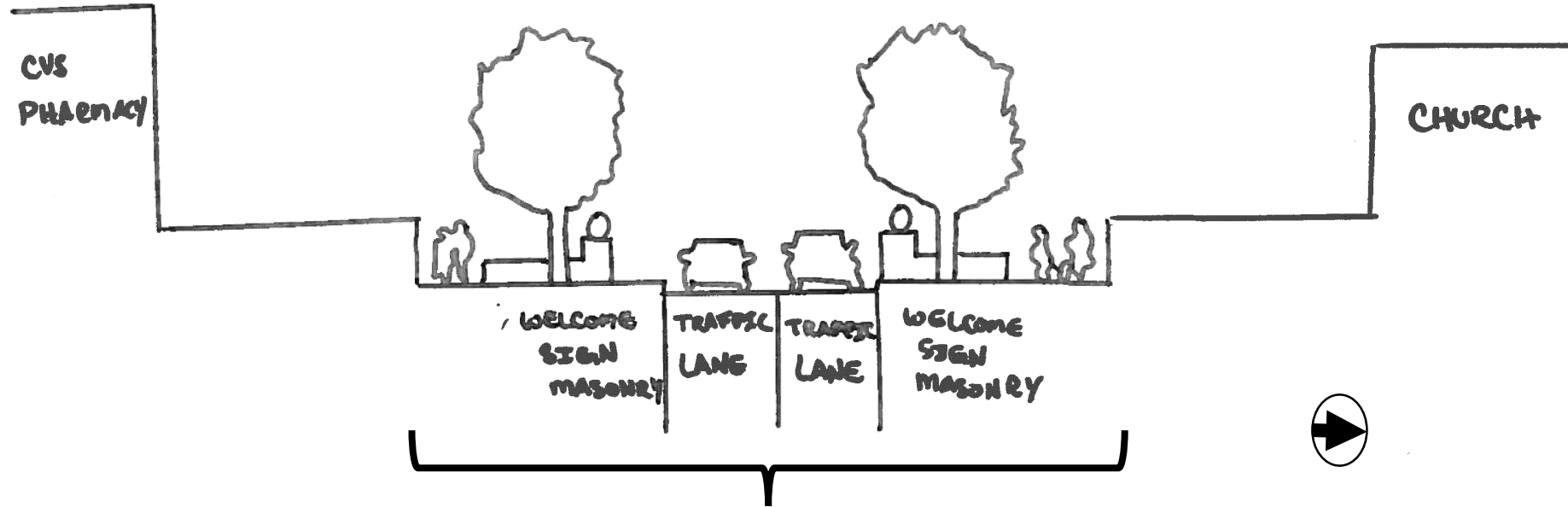
- Gateways to the Boston Edison neighborhood



Dexter at Glendale (Current)



Dexter at Glendale (Proposed)



97ft

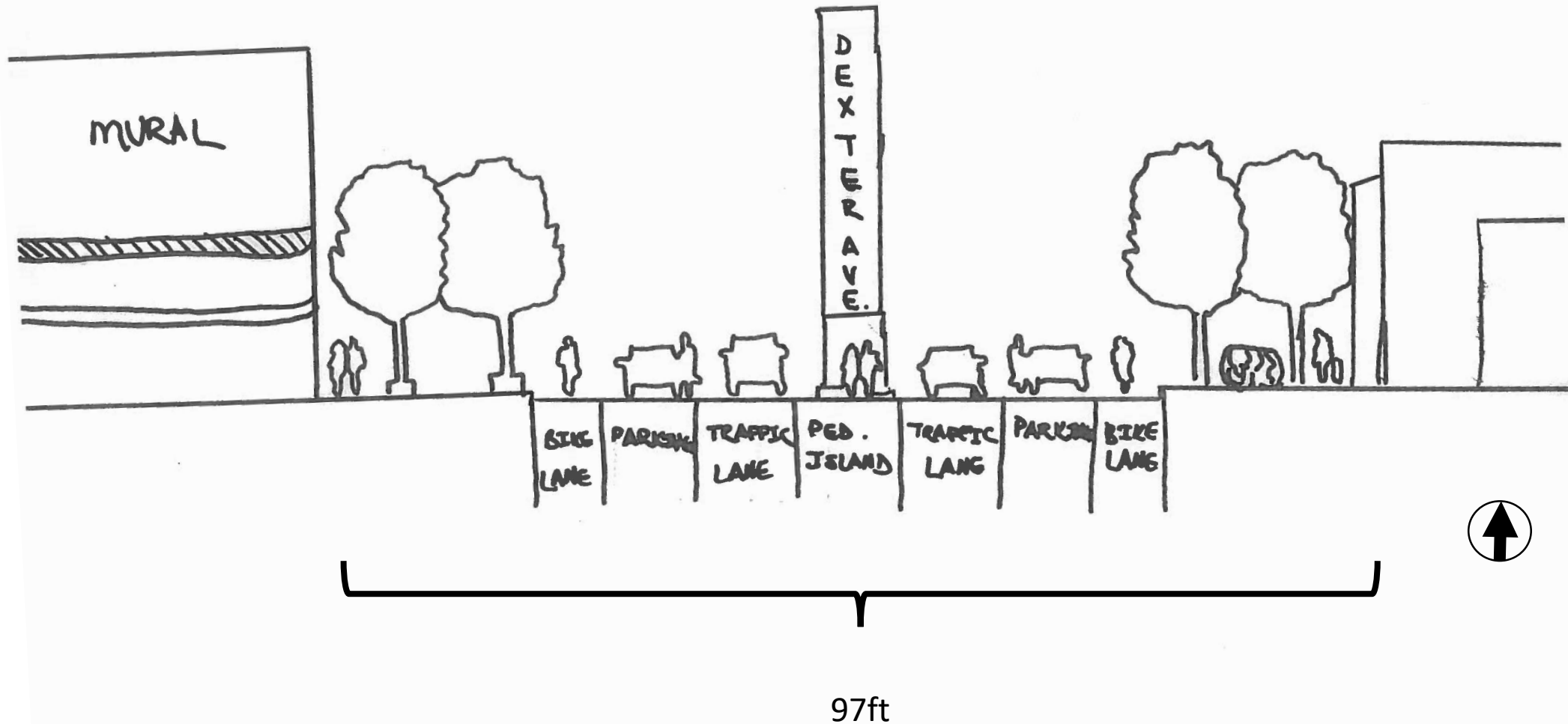
Streetscape (Current):

Dexter at Davison,
Detroit, MI

- Dexter/Davison Pillar



Dexter at Buena Vista (Proposed)





**HOW DO YOU
FEEL ABOUT
HISTORIC
DISTRICT
GATEWAYS**

**STREET-
SCAPE**

Greenway:

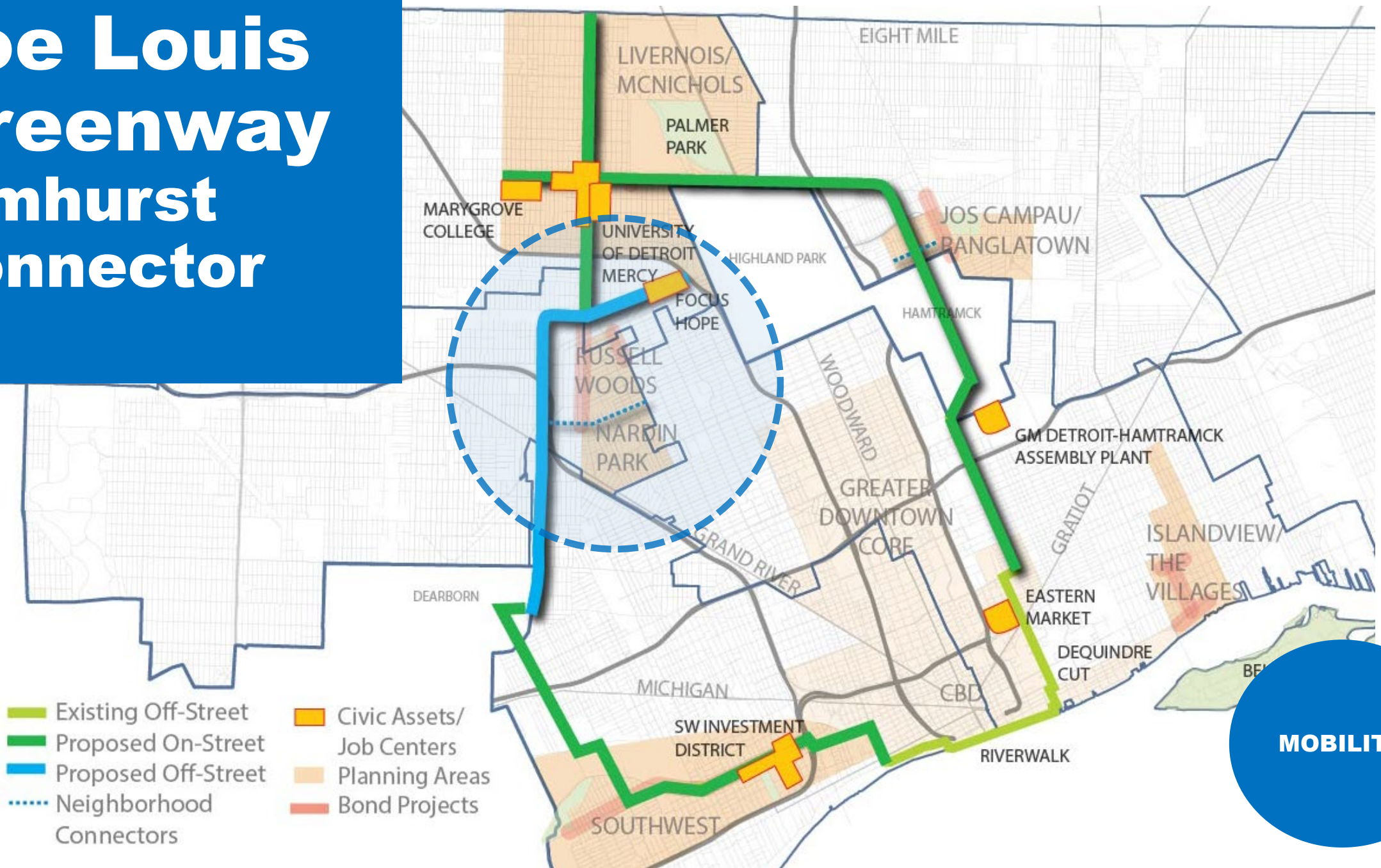
A network of open space, trails, and bike lanes for walking, jogging, biking and roller-blading that links neighborhoods and destinations such as parks, schools, libraries and shopping areas.



Dequindre Cut

MOBILITY

Joe Louis Greenway Elmhurst Connector



MOBILITY



Joe Louis Greenway Timeline



**PLANNING
BEGINS
1st
QUARTER
2019**

MOBILITY

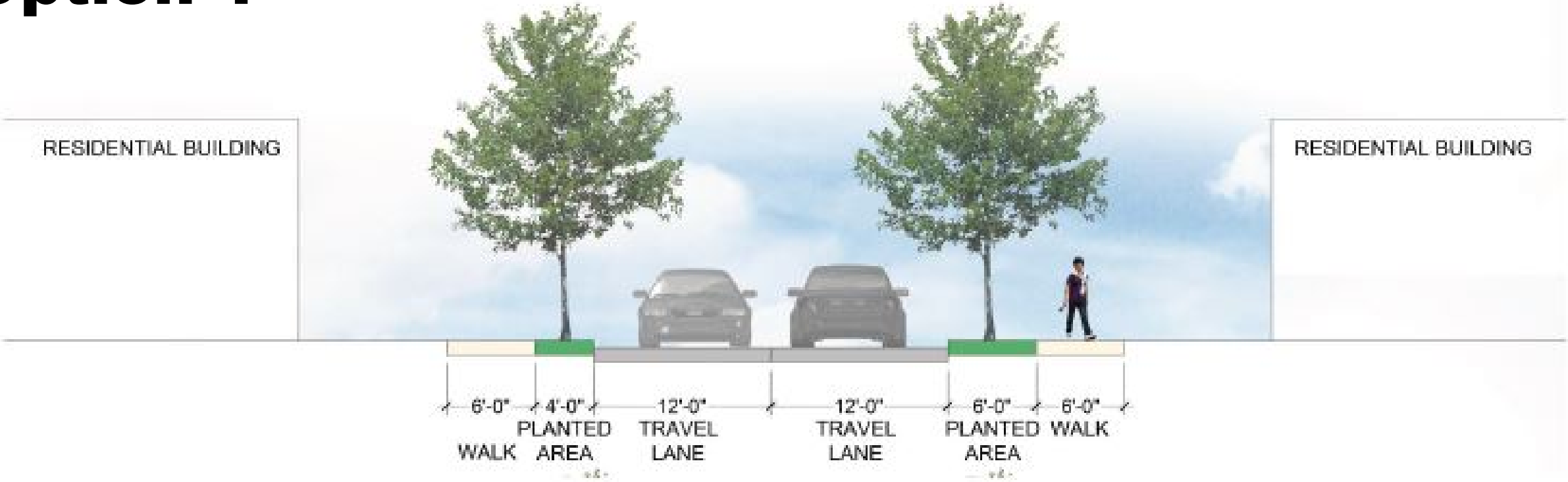
Elmhurst Residential area

Existing Streetscape



Elmhurst Residential area

Option 1

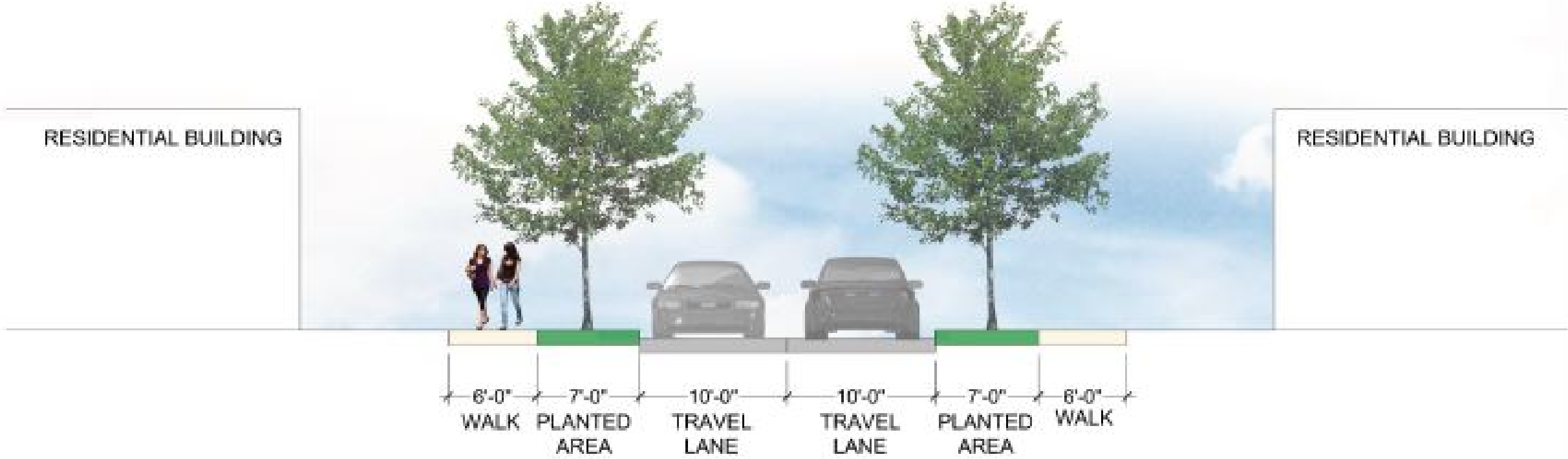


- Wide traffic lanes
- Planting area
- Bikes share road with cars



Elmhurst Residential area

Option 2



- **Narrow traffic lanes to slow traffic**
- **Enhanced planting area**
- **Bikes share road with cars**



Elmhurst Residential area

Option 3



- **Narrow traffic lanes to slow traffic**
- **Enhanced planting area**
- **Bikes removed from road to shared mixed-use path**



Elmhurst Avenue Residential



**Which option
do you prefer?**

**STREET-
SCAPE**

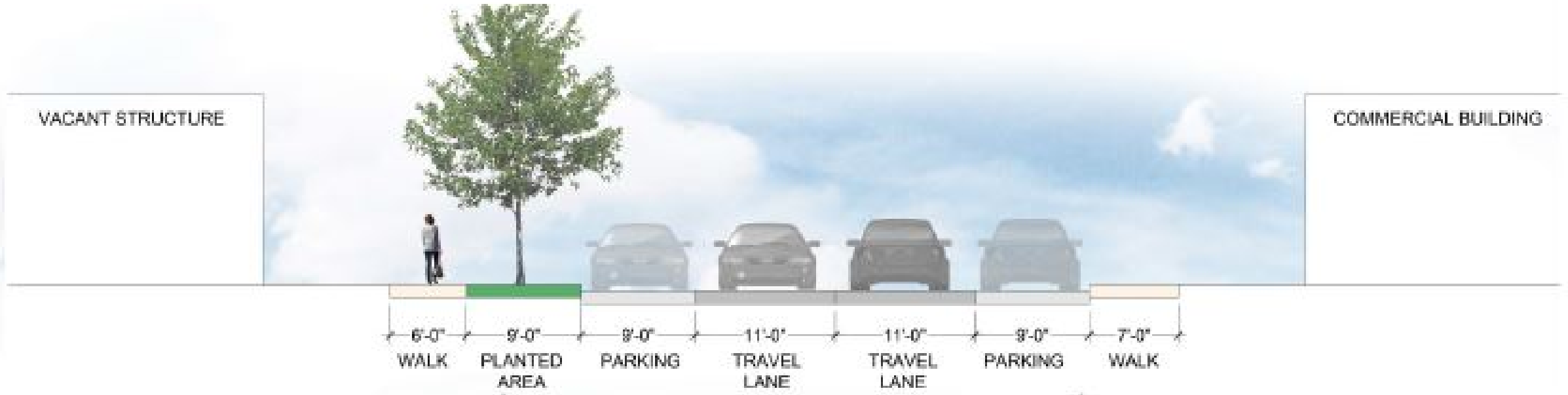
Elmhurst Commercial area

Existing Streetscape



Elmhurst Commercial area

Option 1: Existing

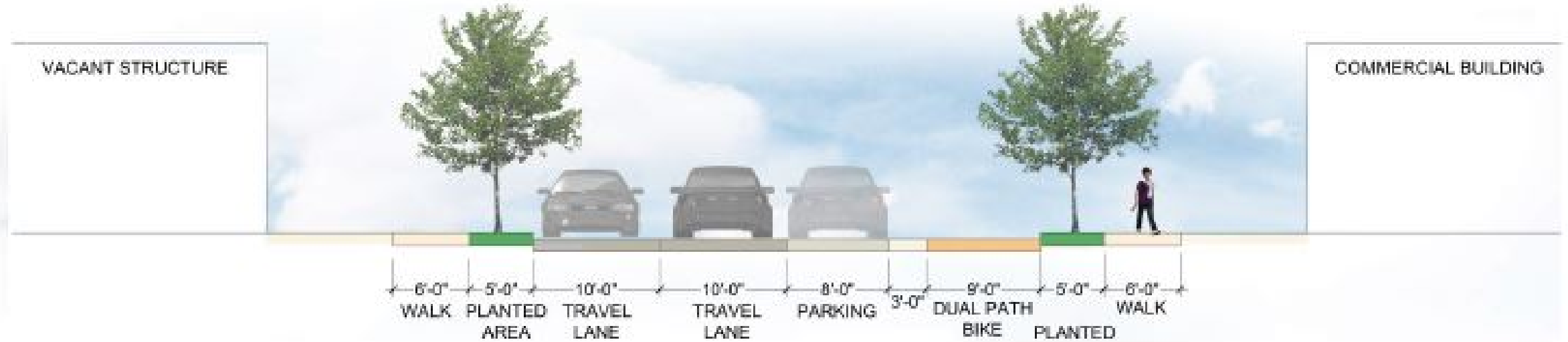


- **Parking on both sides of the street**
- **Street trees on one side of street**
- **Bikes shared the road with cars**



Elmhurst Commercial area

Option 2

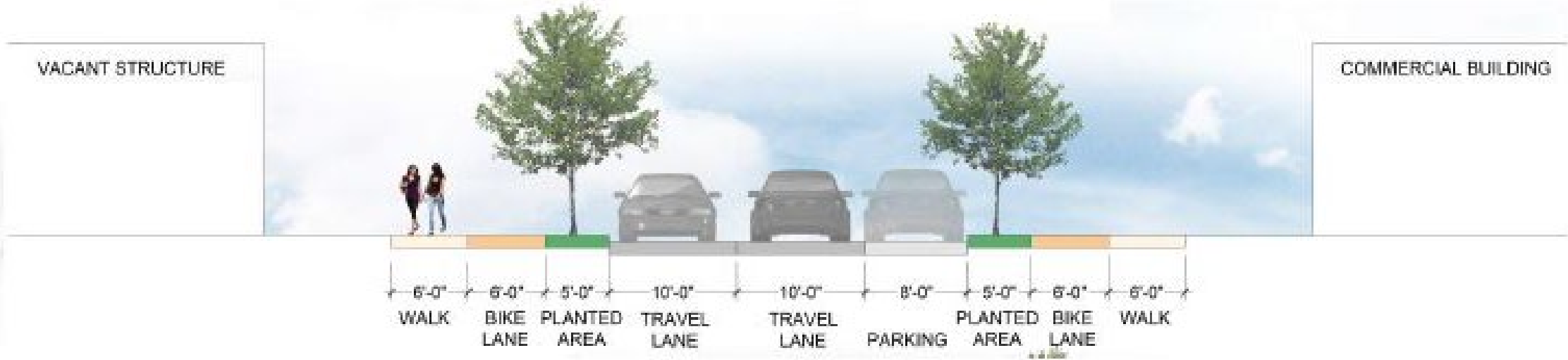


- **Parking on east side of the street**
- **Street trees on both sides of street**
- **Bikes are off road and on shared use path with pedestrians**



Elmhurst Commercial area

Option 3: Existing



- **Parking on east side of the street**
- **Street trees on both sides of street**
- **Bikes are off road and on bike paths**



Elmhurst Avenue Commercial



**Which option
do you prefer?**

**STREET-
SCAPE**

Russell Woods Neighborhood Gateways

Streetscape Ideas:

Broadstreet at Davison,
Detroit, MI

- Broadstreet/Davison
masonry sign gateway

A photograph of a brick masonry sign gateway. The sign is made of dark brown bricks and features the text "RUSSELL WOODS - SULLIVAN" in a recessed, dark rectangular panel. The sign is set against a background of trees and a clear blue sky. The foreground shows a grassy area with some dry brush and a concrete curb.

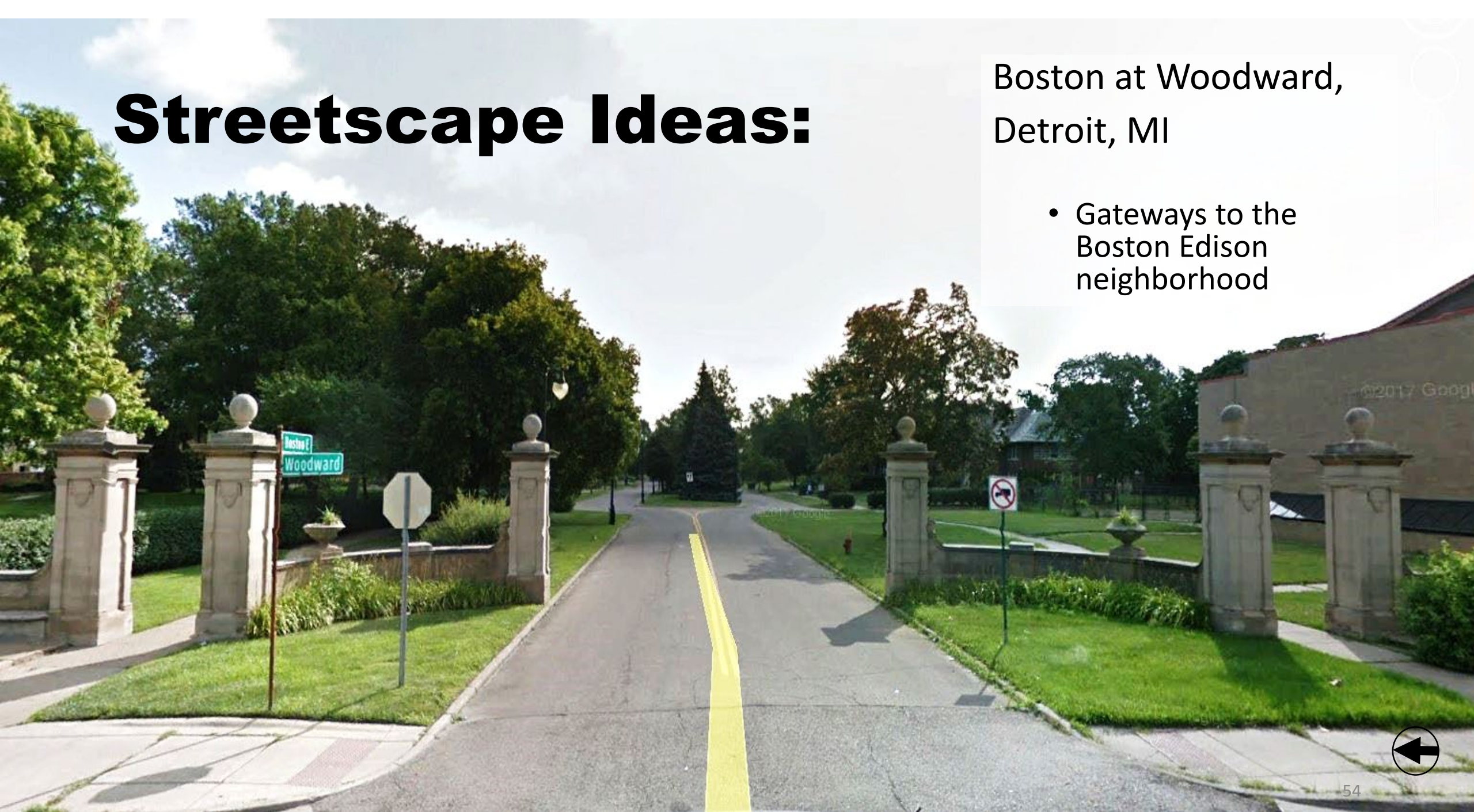
RUSSELL WOODS - SULLIVAN



Streetscape Ideas:

Boston at Woodward,
Detroit, MI

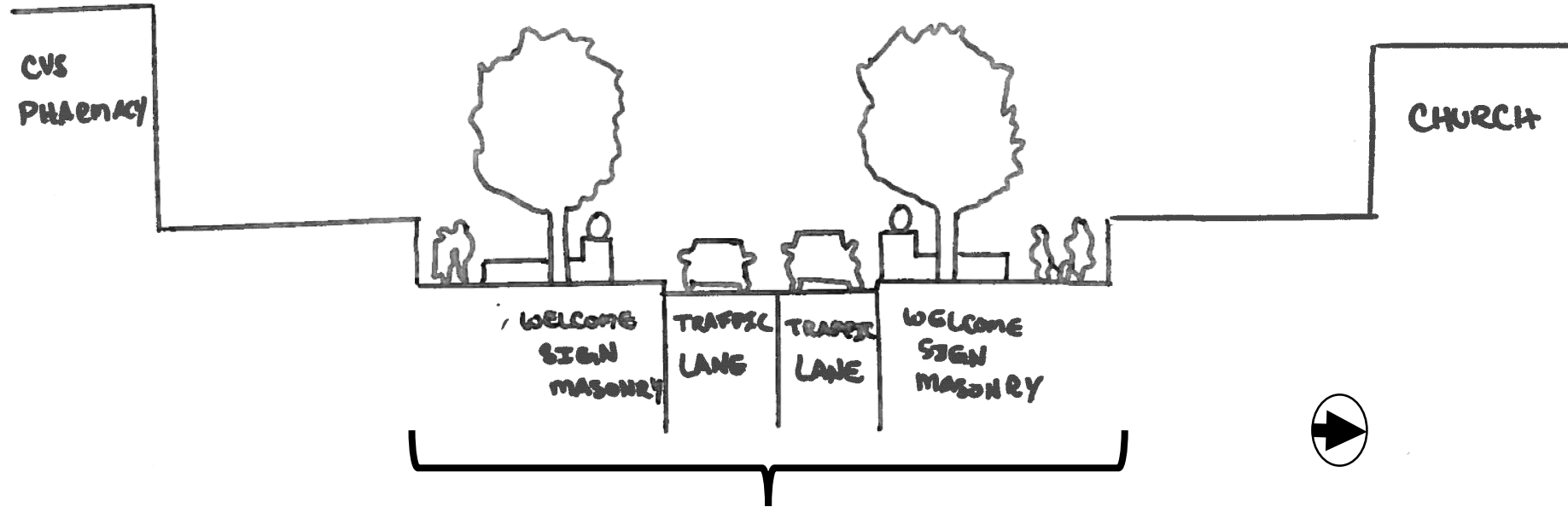
- Gateways to the Boston Edison neighborhood



Dexter at Glendale (Current)



Dexter at Glendale (Proposed)



97ft

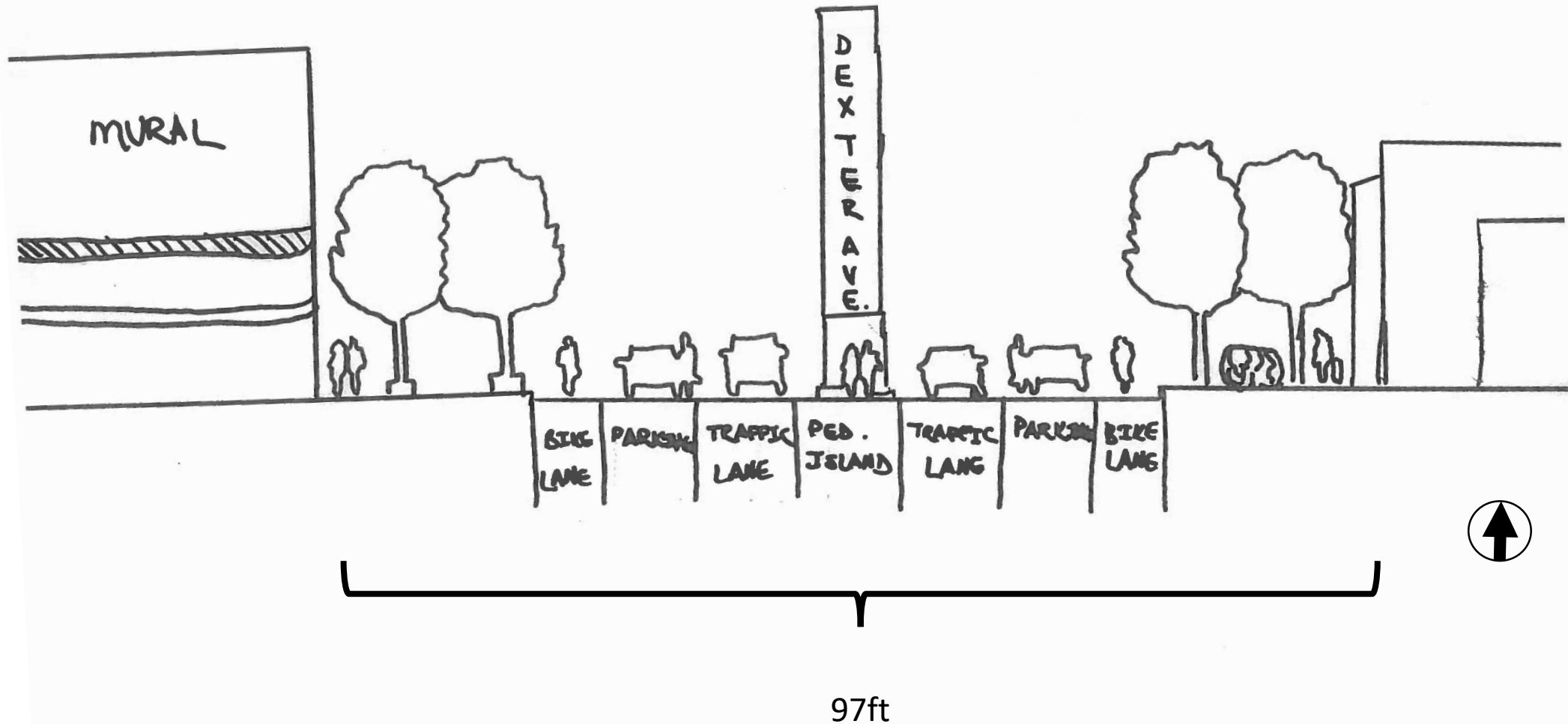
Streetscape (Current):

Dexter at Davison,
Detroit, MI

- Dexter/Davison Pillar



Dexter at Buena Vista (Proposed)





**HOW DO YOU
FEEL ABOUT
HISTORIC
DISTRICT
GATEWAYS**

**STREET-
SCAPE**

STREETSCAPE + MOBILITY NOVEMBER 2018 FOCUS GROUPS FEEDBACK

Streetscape Node 1 and Node 2

- **Residents want to see more crash data and bike lane information/benefits on the December 2018 boards**
- **Residents would like more information about showing a two way bike lane on one side of the street for Dexter Avenue**
- **Residents want to see if bulb outs could help slow traffic in areas and define parking**
- **Residents are concerned that eliminating a traffic lane may cause congestion at Dexter and Davison. Planners have discussed that it will slow traffic at the intersection and could prevent some of the crashes happening there.**

Neighborhood Gateways

- **Residents liked the idea of having gateways to the neighborhood not only to Russell Woods- Sullivan but also in Nardin Park**