



ProjectDox® Component Customer Installation v. 8.3.8.8 and Above

System Use Requirements




4835 East Cactus Road Suite 420
Scottsdale, Arizona 85254
Phone: 602.714.9774
www.avolvesoftware.com

Table of Contents

1	General Information	4
1.1	Requirements	4
1.2	Pop-Up Blocker	5
2	Internet Explorer 11	5
2.1	Configure Pop-Up Blocker	5
2.2	Adding ProjectDox as a Trusted Site	7
2.3	Compatibility View Settings	8
2.4	Installing ProjectDox Components	9
2.5	Disabling the UAC	10
2.5.1	Windows 7	10
2.5.2	Windows 8	11
2.6	Installing Silverlight (GIStream)	12
3	Google Chrome	13
3.1	Configure Pop-Up Blocker	13
4	Firefox	15
4.1	Enabling NPAPI Plug-In (GIStream)	15
4.2	Configure Pop-Up Blocker	15
5	Safari 7 & 8	17
5.1	Pop-Up Blocker	17
5.2	Configure Silverlight (GIStream)	18

Welcome to ProjectDox. Before using the ProjectDox system for the first time, please verify the following items are disabled and/or installed on your system. The following pages will provide you information on how to configure these items for access to collaborate and review your information electronically, 24/7.

- Pop-up Blocker disabled (if applicable)
- ProjectDox Components installed
- Silverlight installed (if using GIStream)

Icon	Represents
	Good to know

1 General Information

1.1 Requirements

The Matrix below displays the requirements needed for each browser to interact properly with the ProjectDox application.

Requirements	Internet Explorer 11*	Firefox 39.0	Chrome 44.0.2403.89 m	Apple Safari 7.1	Apple Safari 8.0
Install Silverlight (if using GIStream)	X	X	**	X	X
Enable NPAPI (Silverlight plug-in, if using GIStream)		X	**		
Configure Pop-up blocker	X	X	X	X	X
Compatibility View Settings	X				
Adding Trusted Site	X				
Install of ProjectDox Components (one-time only)	X				
Disabling the UAC	X				

*Internet Explorer 11 is required for compatibility with the HTML uploader tool.

** As of version 42 of Chrome, Google has removed support for the Silverlight plug-in (NPAPI). It is not automatically enabled and, upon release of version 45, will not be available for use. Support for future versions of Chrome will be available in the latest release of ProjectDox.

1.2 Pop-Up Blocker

ProjectDox uses pop-up windows (browser windows with no toolbars). If you log in, but no ProjectDox window appears, or a warning is received, it is likely that a pop-up blocker is preventing the main project window from opening. You need to allow **ALL** pop-ups for the ProjectDox site. You can do this in one of two ways:

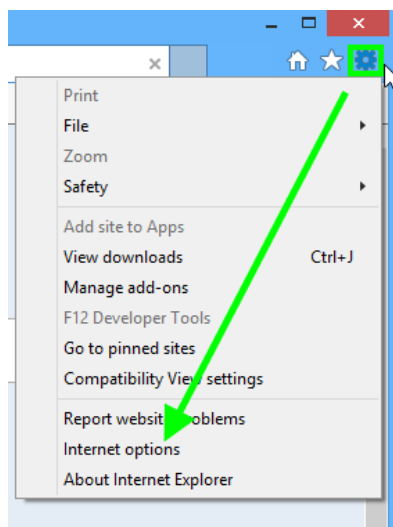
- 1) Disable pop-up blockers entirely.
- 2) Configure blocker to allow pop-ups for specified sites.

In the following sections you will find information that will assist in setting up the allowance of pop-ups for several browsers. If after going through the steps you still have difficulty with the ProjectDox application, verify your system has no other pop-up blockers installed. For instance, if the Google Search bar is installed, it contains its own pop-up blocker that will need to be disabled. In some cases, anti-virus software can cause similar behavior. If you verify all pop-up blockers are disabled and you continue to have issues check your system anti-virus logs to see if that software may be blocking the site from displaying. If the anti-virus is blocking the installation, add the necessary exceptions.

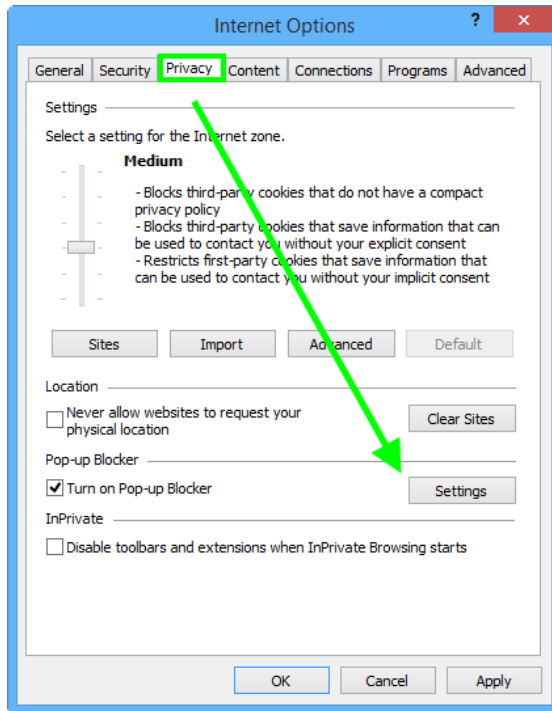
2 Internet Explorer 11

2.1 Configure Pop-Up Blocker

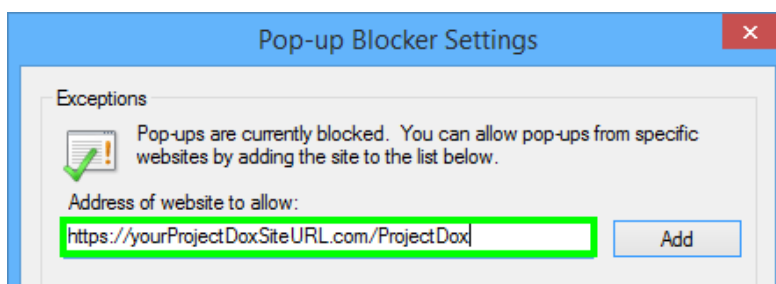
- 1) Select the **Tools** icon in the top right corner.
- 2) Choose **Internet Options** from the dropdown.



- 3) Select the **Privacy** tab and, in the *Pop-up Blocker* section, click the **Settings** button.



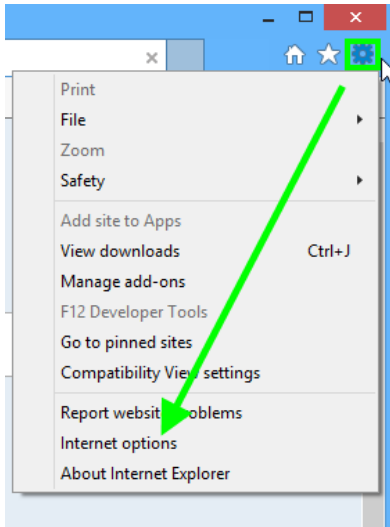
- 4) Type the ProjectDox URL in the field within the *Exceptions* area, then click **Add**.



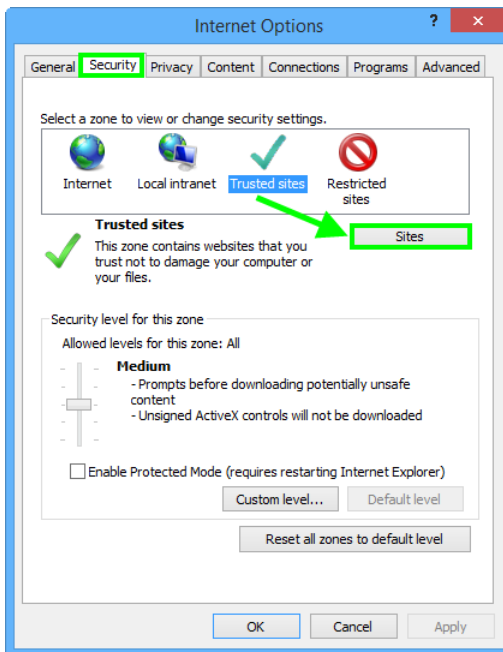
- 5) Close the window, then click **OK** in the *Internet Options* window.

2.2 Adding ProjectDox as a Trusted Site

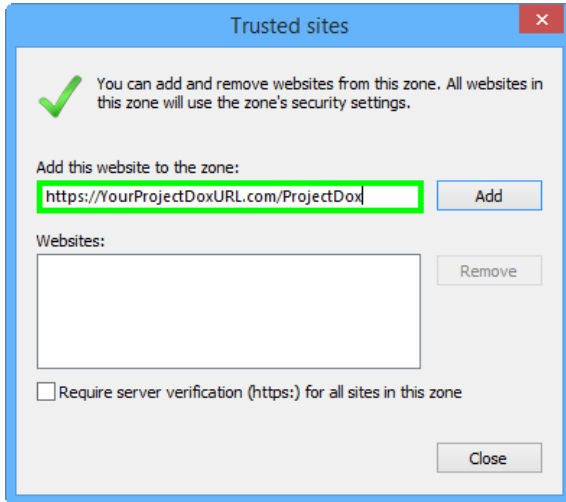
- 1) Select the **Tools** icon in the top right corner of the browser.
- 2) Choose **Internet Options** from the dropdown.



- 3) In the *Security* tab, click **Trusted sites** to highlight, then click the **Sites** button.



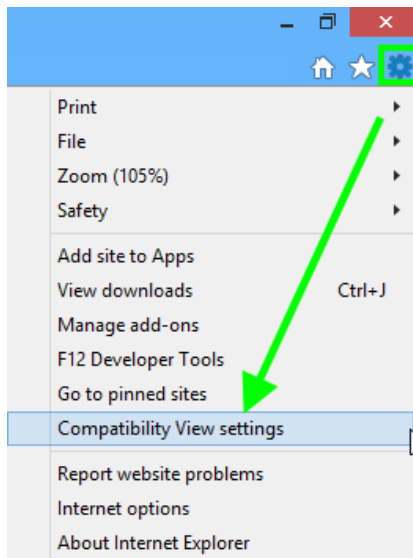
- 4) Enter the URL in the field, then click **Add**.



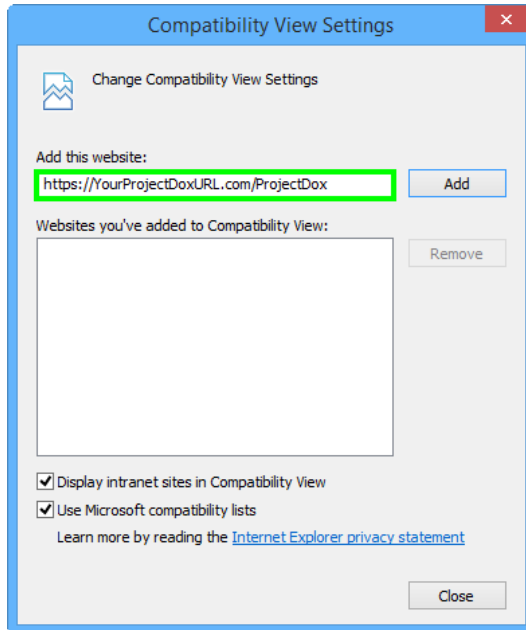
- 5) Close the window, then select **OK** in the *Internet Options* window.

2.3 Compatibility View Settings

- 1) Select the **Tools** icon in the top right corner of the browser.
- 2) Click on **Compatibility View settings**.



3) Enter your ProjectDox site into the field below, and click **Add**.

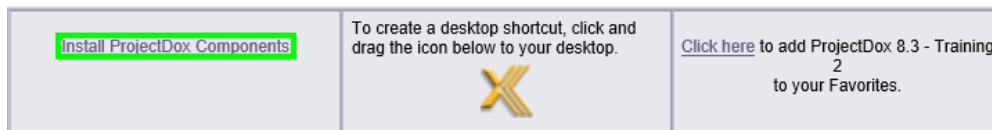


4) Close the window.

2.4 Installing ProjectDox Components

ProjectDox requires the installation of ActiveX controls to be able to perform certain actions: uploading files, downloading files, viewing files, and viewing help information. There are two ways users can install the controls:

The link to an MSI file for installing the ActiveX controls is available from the login screen.



If using the MSI from the login page, the user can accept the defaults to run the MSI and install the controls. If not using the MSI, then after logging in to the site, the user will be prompted by the browser to install the ActiveX control (yellow bar at top of the screen or at the bottom of the screen, depending on system version) when attempting to view help information, or uploading, downloading or viewing files. If the user's network requires administrative access to download

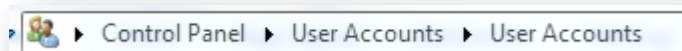
ActiveX controls, the user will **NOT** be prompted, nor will the MSI on the login screen install. The user will need to contact their network administrator to get access to download these controls.

2.5 Disabling the UAC

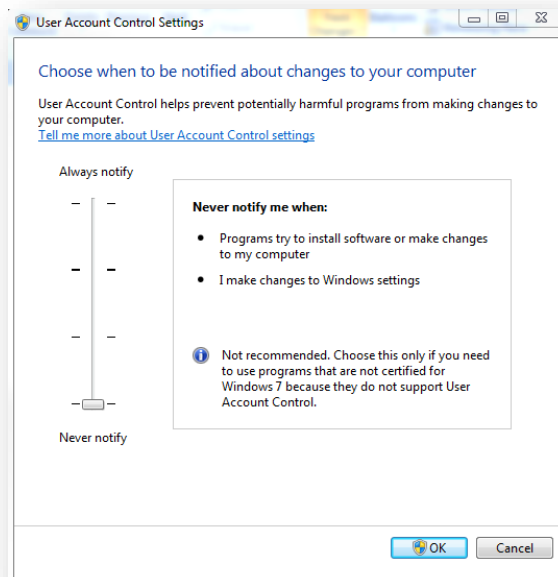
Disabling of the UAC control should be discussed with your network administrator prior to making changes to your system, if applicable. In all cases, after the installation is complete and each of the actions have been performed once (uploading files, viewing files, downloading files, and viewing help, as applicable) the UAC control can be returned to the former setting.

2.5.1 Windows 7

- 1) From the Control Panel, open **User Accounts**.



- 2) Click the **Change User Account Control Settings** link.
- 3) Click and drag the slide control to *Never Notify*.



- 4) Click **OK** and restart the system. This must be done in order for the UAC changes to take effect.

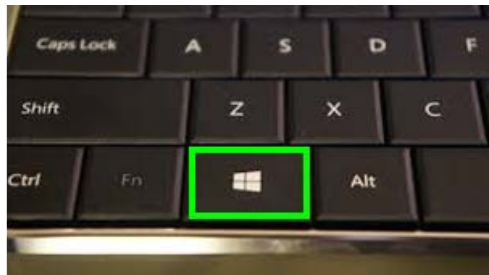


The user's permissions level/rights will affect how the UAC works.

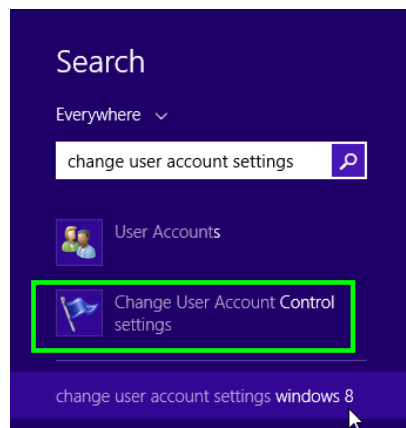
After successful installation and one time usage of the ProjectDox Components, the system's UAC control can be returned to the former setting. A reboot will be required for the change to take effect.

2.5.2 Windows 8

- 1) Select the *Windows* key on your keyboard.



- 2) When the menu appears, start typing "Change User Account Settings." It will initiate a search.
- 3) Select the following from the search results.



- 4) Click and drag the slide control to *Never Notify*.

- 5) Click **OK**, and restart your system. This must be done in order for the UAC changes to take effect.



The user's permissions level/rights will affect how the UAC works.

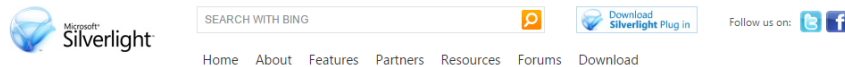
After successful installation and one time usage of the ProjectDox Components, the system's UAC control can be returned to the former setting. A reboot will be required for the change to take effect.

2.6 Installing Silverlight (GStream)

The installation of Silverlight is typically pushed to your computer by your network administrator. Should manual installation be necessary, Admin rights to the machine will be required in order to download and successfully install Silverlight.

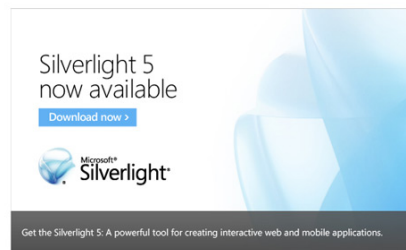
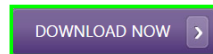
To download Silverlight, follow the steps below:

- 1) Navigate to <http://www.microsoft.com/silverlight/>
- 2) Click the **Download Now** button.

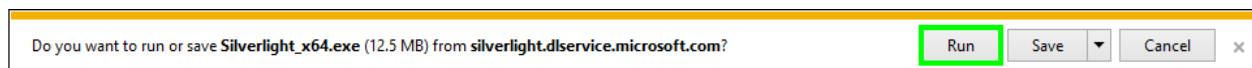


Get Silverlight 5

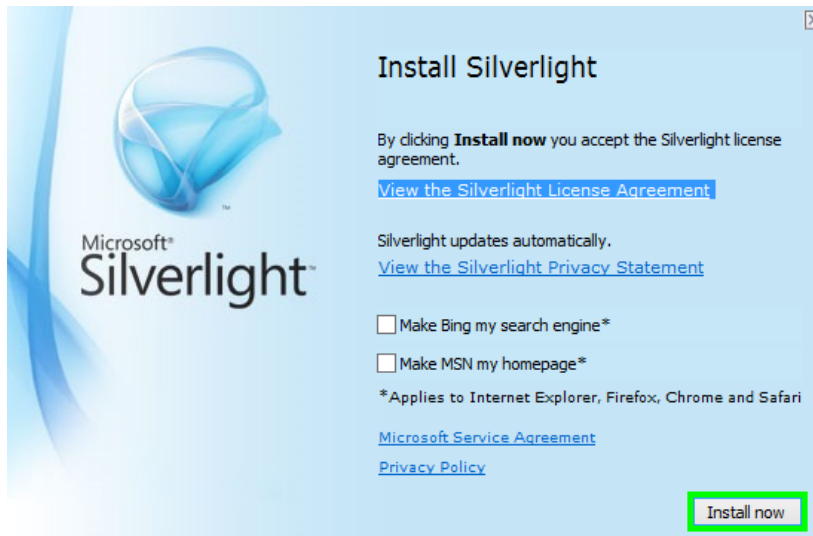
Silverlight is a powerful development tool for creating engaging, interactive user experiences for Web and mobile applications. Silverlight is a free plug-in, powered by the .NET framework and compatible with multiple browsers, devices and operating systems, bringing a new level of interactivity wherever the Web works.



- 3) Select **Run** from the pop-up that appears.




- 4) The files will extract, and the installer will open.
- 5) Select **Install Now**.




3 Google Chrome

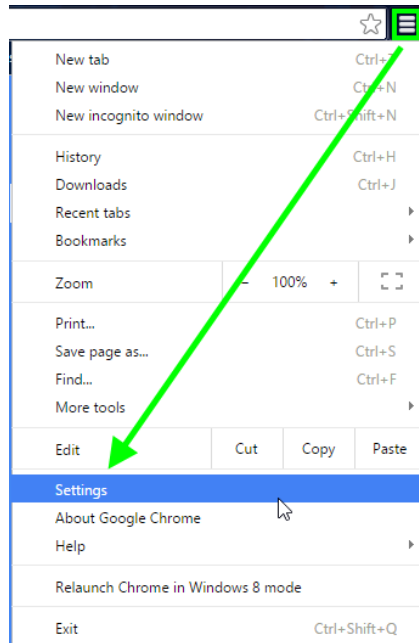
It is recommended that users use the 32 bit version of Chrome; it is known to work better with reports in ProjectDox.



*In order to verify what version of Chrome you are using (32 bit or 64 bit), click on Chrome's menu icon  and select **About Google Chrome**. If it is 64 bit, it will say so in a parentheses, after the version number.*

3.1 Configure Pop-Up Blocker

- 1) In the top-right corner of Chrome, click the Chrome menu icon .
- 2) Select **Settings**.



- 3) Click **Show advanced settings**, found at the bottom of the page.
- 4) Under *Privacy*, click the **Content settings** button.

Privacy

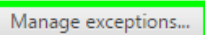


Google Chrome may use web services to improve your browsing experience. You may optionally disable these services. [Learn more](#)

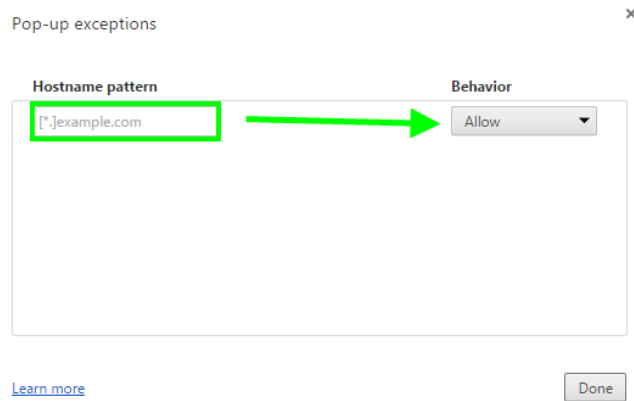
- 5) Under *Pop-ups*, select the **Manage exceptions** button.

Pop-ups

- Allow all sites to show pop-ups
- Do not allow any site to show pop-ups (recommended)



- 6) Enter the ProjectDox URL, then select *Allow* from the dropdown on the right. Click **Done** when finished.



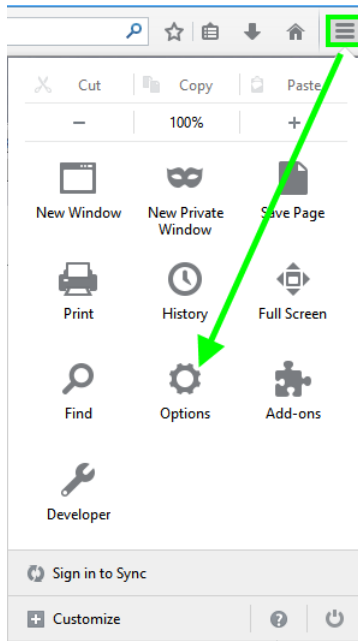
4 Firefox

4.1 Enabling NPAPI Plug-In (GIStream)

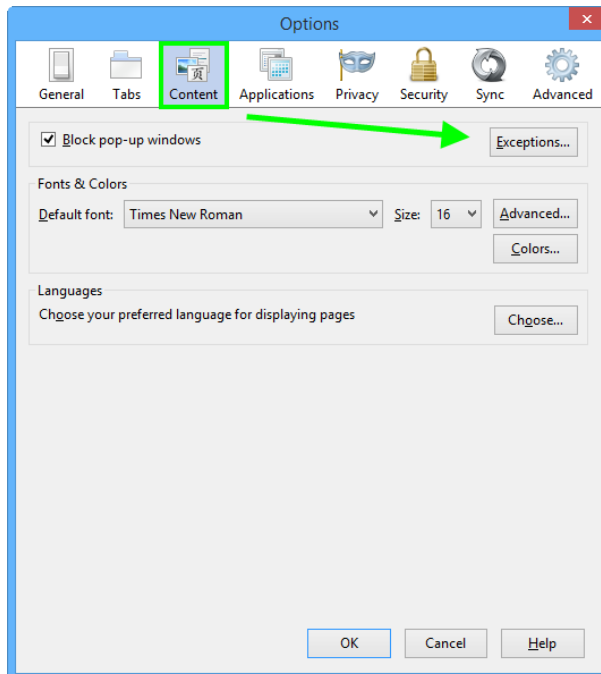
Firefox uses a feature called *Click-and-Play*, which enables the user to simply click where a plug-in is being used to enable it. There should be no further steps necessary in order for the uploader or GIStream to function as expected.

4.2 Configure Pop-Up Blocker

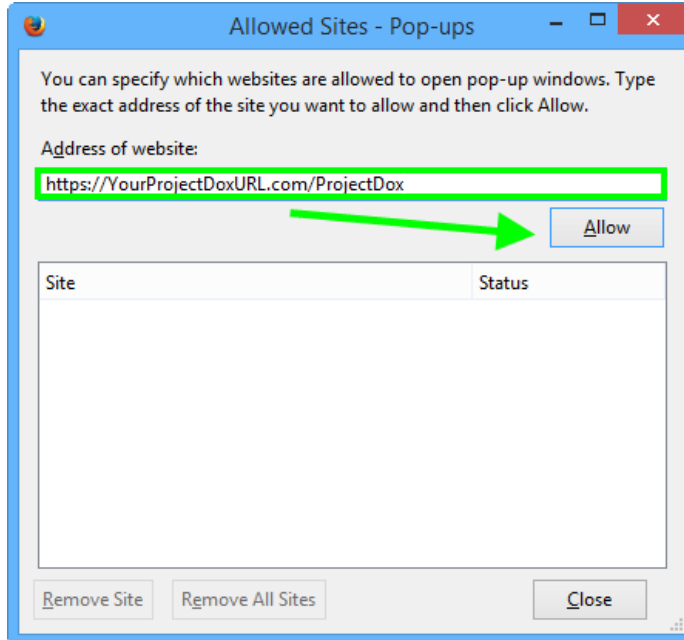
- 1) Click the menu button and select **Options**.



2) In the *Content* tab, under *Pop-ups*, select the **Exceptions** button.



- 3) Enter the ProjectDox URL in the available field, then click **Allow**.

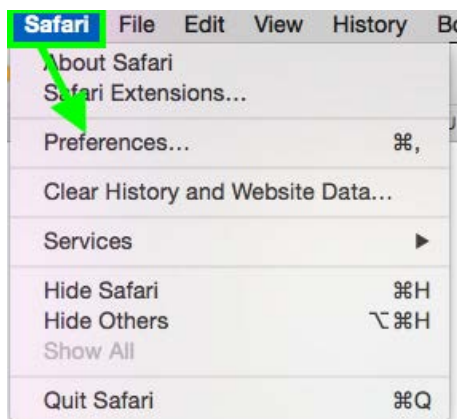


- 4) Close the window.

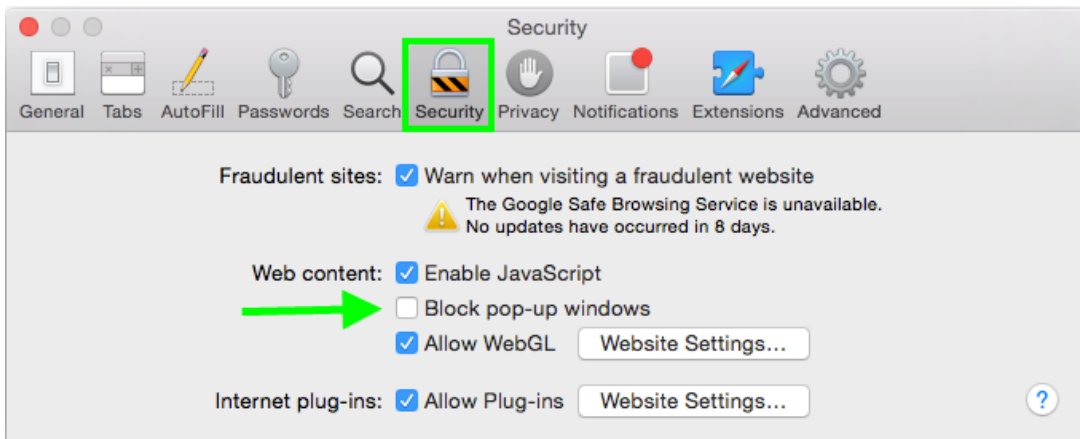
5 Safari 7 & 8

5.1 Pop-Up Blocker

- 1) Select **Safari->Preferences**, then click **Security**.



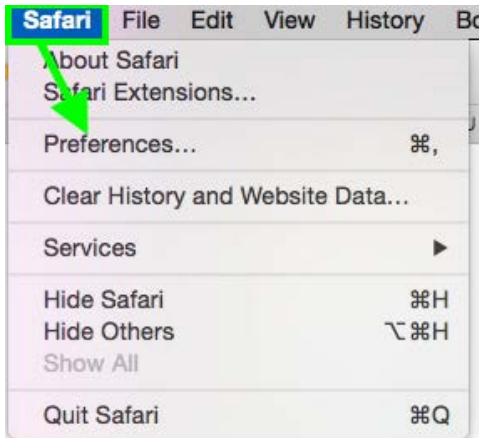
- 2) In the *Web Content* and *Internet plug-ins* sections, deselect the *Block pop-up windows* checkbox.



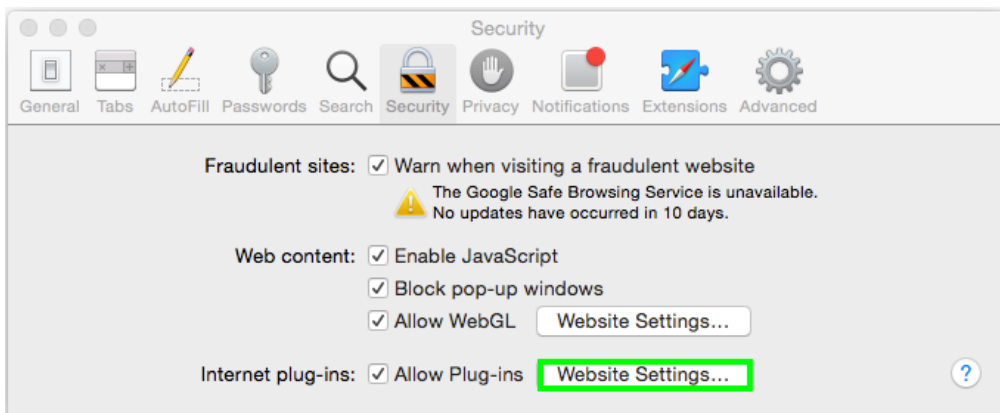
- 3) Close the window.

5.2 Configure Silverlight (GIStream)

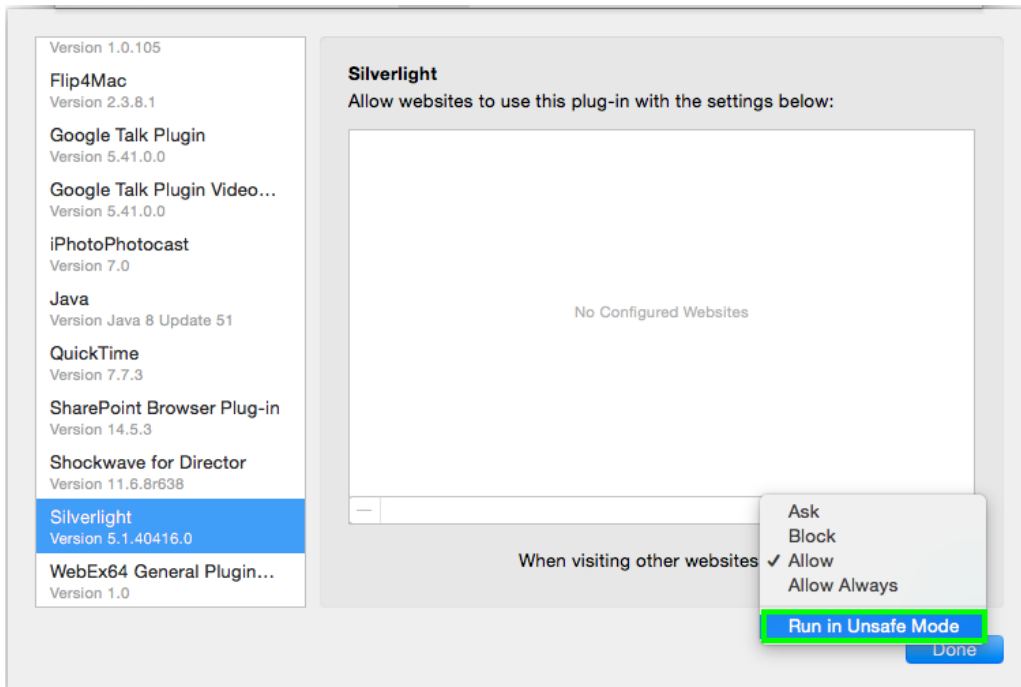
- 1) Select **Safari->Preferences**, then click **Security**.



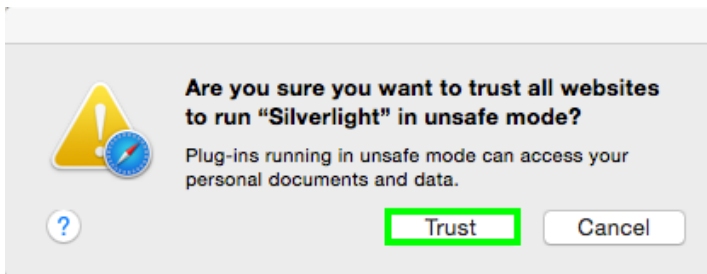
2) In the *Internet Plug-ins* area, select **Website Settings**.



3) Select **Silverlight** from the list of plug-ins on the left. From the dropdown on the bottom right, select **Run in Unsafe Mode**.



4) A warning will appear. Click **Trust**.



5) Silverlight will now run unrestricted. Click **Done**.

